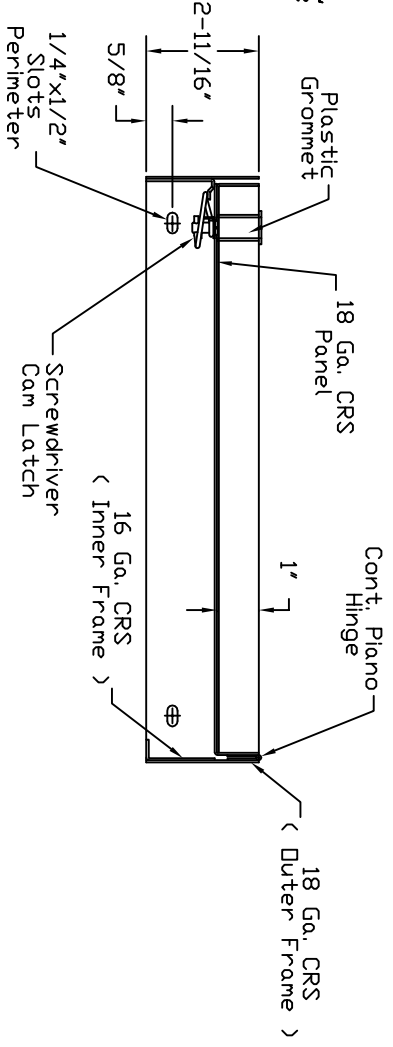
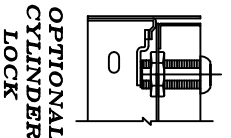
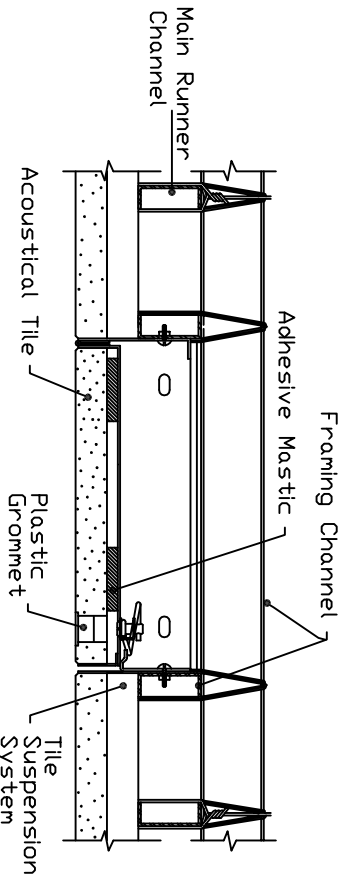
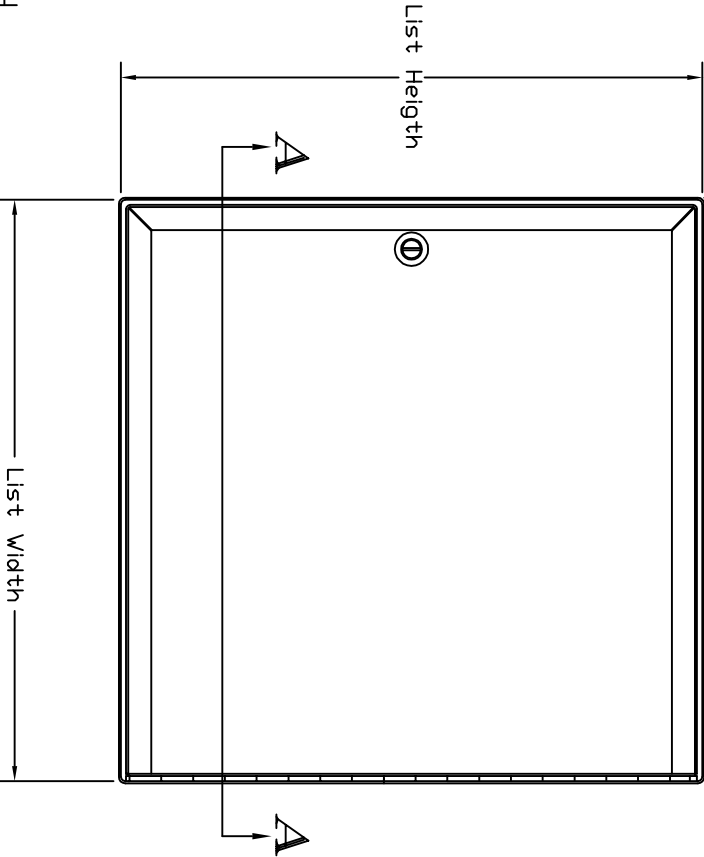


NOTE: FINISH ONE COAT BAKED ON ENAMEL POWDER COATED FINISH

STANDARD SIZES and PRODUCT NUMBERS				
DOOR SIZE	WALL OPENING	PRODUCT NUMBER	No. OF CAMS	Shipping Weight lbs. each
12 x 12	12-1/4 x 12-1/4	3205-014-9	1	7
12 x 24	12-1/4 x 24-1/4	3205-019-9	2	12
18 x 18	18-1/4 x 18-1/4	3205-024-9	2	11
24 x 24	24-1/4 x 24-1/4	3205-030-9	2	19
24 x 36	24-1/4 x 36-1/4	3205-034-9	3	26
36 x 36	36-1/4 x 36-1/4	3205-046-9	5	37



### Installation Detail

#### AT RECESSED PANEL ACCESS DOOR

MATERIAL SCHEDULE		
QUANTITY	SIZE	COVER FRAME

**MICCOR**

COMMERCIAL PRODUCTS GROUP  
484 Thomas Drive  
Bensenville, IL. 60106  
800 624-8642 (fax) 630-766-5259

#### STEEL DOOR for SUSPENDED CEILINGS RECESSED STEEL

DEALER	
PROJECT	
LOCATION	
ARCH.	
CDNT'D	
DATE	DRAWN DCA
REV	JOB NO.
\R13\MLCDR\AT SHEET	