

MILCOR®

Hatch Products

Roof Access Hatches
Floor & Sidewalk Doors



AV

WHERE HIGH EFFICIENCY IS THE STANDARD

EXPERIENCE

Milcor brings over 105 years of experience in the manufacturing of roof hatches, smoke vents and floor doors. Our years of experience gives us the knowledge to provide top of the line, dependable products to our customers.

ENGINEERING

Every Milcor vent, hatch or door product is engineered to meet the specific, in-use requirements of the application for which it was designed.

SELECTION

The Milcor product line contains all of the essential items to meet your construction needs.

ON-TIME DELIVERY

Milcor satisfies your need for on-time delivery to meet your demanding schedule.

QUALITY

Milcor roof hatches and floor doors provide superior performance features unequaled in the industry.

WARRANTY

Milcor warrants all goods sold to be free from defects in workmanship and, not but limits liability to five years from date of shipment and expressly to the replacement of goods not complying with this warranty; or, at our election, a credit to original purchaser for the original purchase price paid less 1/60th of the price for each month elapsed from the original invoice date to the date of claim against this warranty.

Electric motors, special finishes and any other optional special components required shall be warranted separately by the manufacturers of those products.

INDEX

ROOF ACCESS HATCHES**5**

M-1**5**

The Milcor M-1 Hatch is our most popular access hatch. The M-1 is FL product approved carrying a 70 psf and is powder coated to withstand the element.

Personnel**6-10**

Milcor’s Personnel Roof Access Hatches provide convenient access to the building’s roof. These include hatches that accommodate ladder, ship stair, service stair access and thermal resistance.

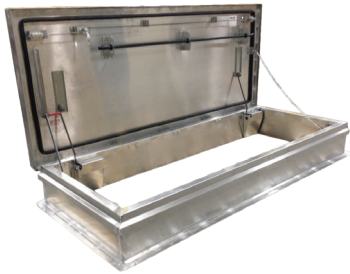
Equipment**11**

Larger Double Leaf Hatches to allow for equipment to be dropped into or loaded out of the building.

Safety Products**12-13**

*Safety Rail Systems *Upright Safety Bar

Hatch Options**13**



FLOOR & SIDEWALK DOORS**14**

Non-Security**15**

Equipped with lift ring for easy access for use in non-secure environments.

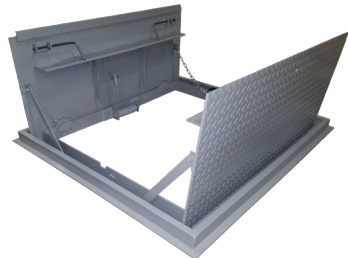
Security**16**

Snap latches with removable top handles prevent undesired access.

Sidewalk**17**

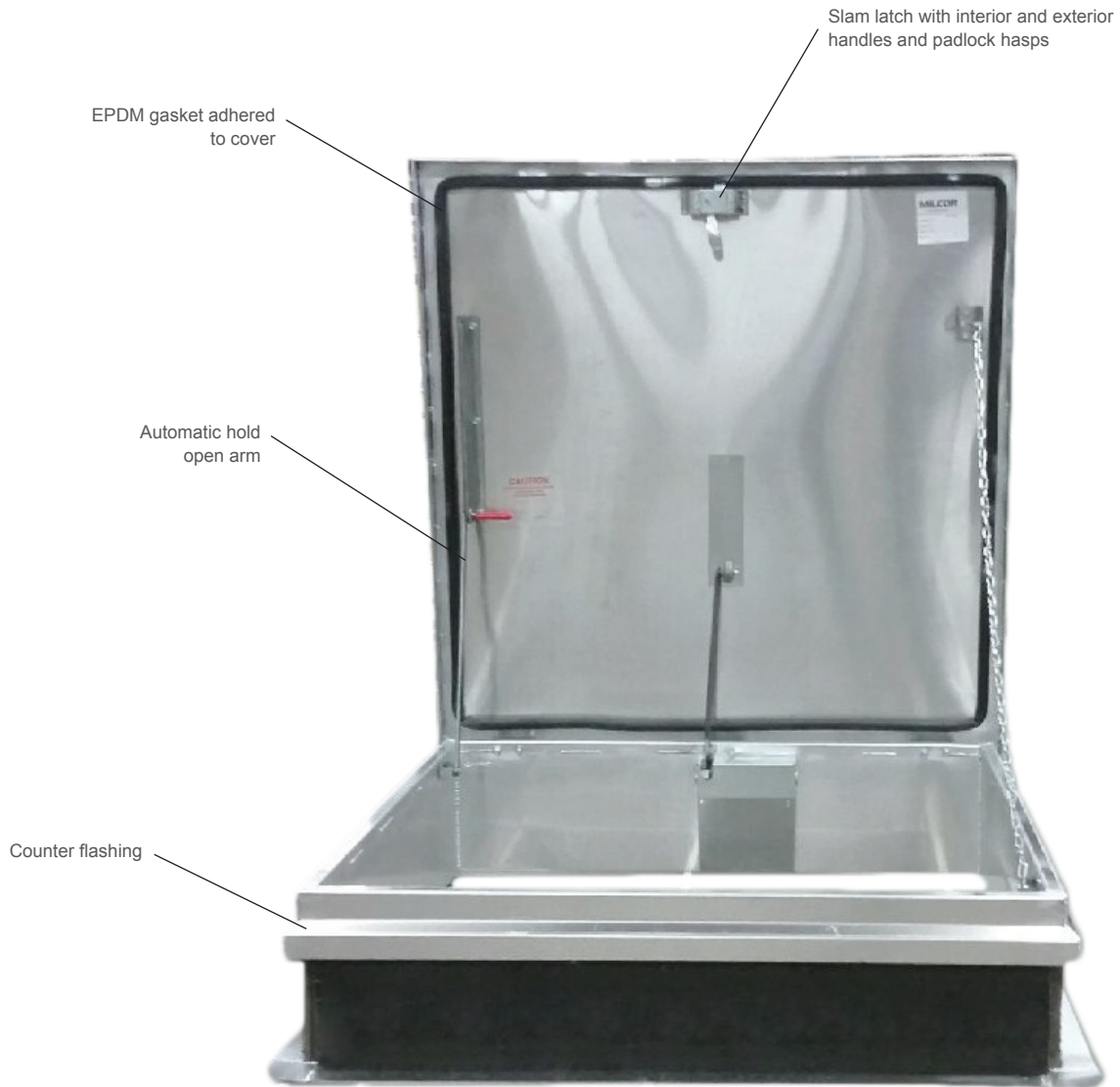
For Exterior Access Applications or where interior moisture conditions require drainage provisions.

Floor & Sidewalk Door Options**18**



ROOF ACCESS HATCHES

PRODUCT FEATURE



Features & Benefits

- Fully insulated cover and curb
- High load capacity reaching up to 70 psf
- Interior and Exterior Padlock Hasps as standard
- Lift Assistance for easy opening

ROOF ACCESS HATCHES

M-1 HATCH

SPECIFICATIONS

Material: 14 gauge galvanized steel cover and Curb

Finish: Galvanized Steel: White Powder Coat

Cover:

- 14 gauge galvanized steel exterior with 22 gauge galvanized steel liner bonded to core of 1" rigid polystyrene insulation.

Curb: 14 gauge galvanized steel with a 12" high curb, integral counterflashing, 3½" wide mounting flanges with pre-drilled holes and 1" exterior fiberboard insulation

Gasket: Extruded EPDM rubber gasket adhered to cover

Hinges: Integrated Plate Hinge

Lift Assist: Cover operation is assisted by gas spring

Latches: Slam latch with interior and exterior handles and padlock hasps

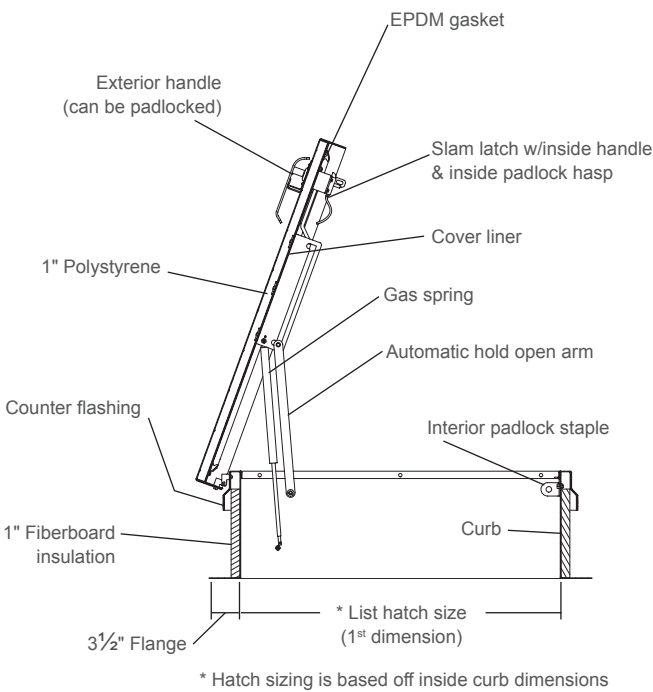
Hardware: All hardware is zinc plated (stainless steel hardware optional)

Load Capacity: 70 psf

Certifications: Florida Product Approval: FL 16737-R2



Size	Galvanized Steel Cover and Curb
	Model No.
3' 0" x 2' 6"	M-1



ROOF ACCESS HATCHES

PERSONNEL

LADDER ACCESS

SPECIFICATIONS

Material:

- M: 14 gauge galvanized steel cover and curb
- RB: 14 gauge galvanized steel cover and curb
- RC: .090 Aluminum cover and 14 gauge galvanized steel curb
- RD: .090 Aluminum cover and curb

Finish:

- Galvanized Steel: White Powder Coat
- Aluminum: Mill Finish

Cover:

- covers open easily to 90 degrees
- M & RB: 14 gauge galvanized steel exterior with 22 gauge galvanized steel liner bonded to core of 1" rigid polystyrene insulation (M Style) or 1" fiberglass insulation (RB Style).
- RC & RD: Mill finish .090 aluminum exterior with .063 aluminum liner with 1" fiberglass insulation. (RD-1 uses 1" Styrofoam insulation)

Curb:

- M, RB & RC: 14 gauge galvanized steel with a 12" high curb, integral counterflashing, 3½" wide mounting flanges with pre-drilled holes and 1" exterior fiberboard insulation
- RD: Mill finish .090 aluminum with a 12" high curb, integral counterflashing, 3½" wide mounting flanges with pre-drilled holes and 1" exterior fiberboard insulation

Gasket: Extruded EPDM rubber gasket adhered to cover

Hinges: Steel Pintle Hinge

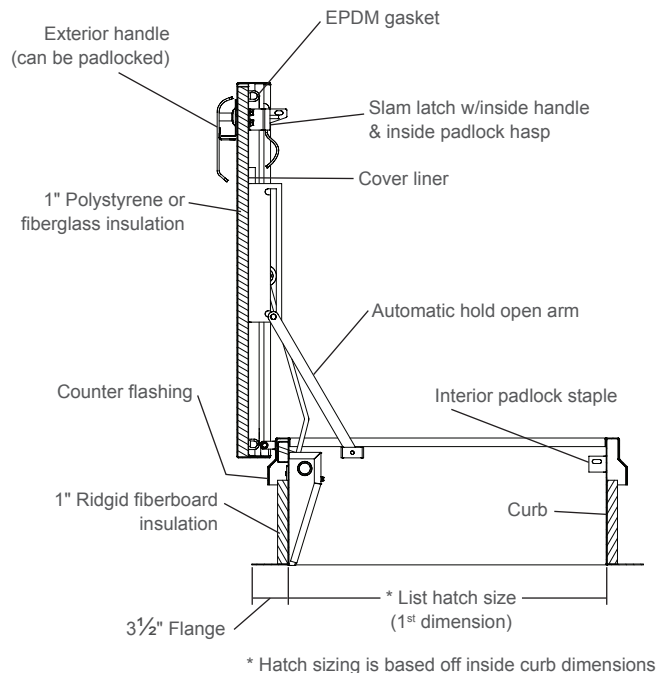
Lift Assist: Cover operation is assisted by enclosed heavy-duty Torsion Coil Spring

Latches: Slam latch with interior and exterior handles and padlock hasps.

Hardware: All hardware is zinc plated (stainless steel hardware optional)

Load Capacity:

- M & RD-1: 70 psf
- RB, RC & RD-3x3: 40 psf



Size	Galvanized Steel Cover and Curb		Galvanized Steel Cover and Curb		Aluminum Cover, Galvanized Curb		Aluminum Cover and Curb	
	Model No.	Lbs.	Model No.	Lbs.	Model No.	Lbs.	Model No.	Lbs.
3'0" x 2'6"			RB-1	205	RC-1	160	RD-1	125
3'0" x 3'0"	M-3x3	254					RD-3x3	155
4'0" x 4'0"	M-7	365	RB-4x4	365			RD-4x4	200

ROOF ACCESS HATCHES

PERSONNEL

SHIP STAIR

SPECIFICATIONS

Material:

- M: 14 gauge galvanized steel cover and Curb
- RB: 14 gauge galvanized steel cover and Curb
- RC: .090 Aluminum Cover and 14 gauge galvanized steel Curb
- RD: .090 Aluminum Cover and Curb

Finish:

- Galvanized Steel: White Powder Coat
- Aluminum: Mill Finish

Cover: Covers open easily to 90 degrees

- M & RB: 14 gauge galvanized steel exterior with 22 gauge galvanized steel liner bonded to core of 1" rigid polystyrene insulation (M Style) or 1" fiberglass insulation (RB Style)
- RC & RD: Mill finish .090 aluminum exterior with .063 aluminum liner with 1" fiberglass insulation

Curb:

- M, RB & RC: 14 gauge galvanized steel with a 12" high curb, integral counterflashing, 3½" wide mounting flanges with pre-drilled holes and 1" exterior fiberboard insulation
- RD: Mill finish .090 aluminum with a 12" high curb, integral counterflashing, 3½" wide mounting flanges with pre-drilled holes and 1" exterior fiberboard insulation

Gasket: Extruded EPDM rubber gasket adhered to cover

Hinges: Steel Pintle Hinge

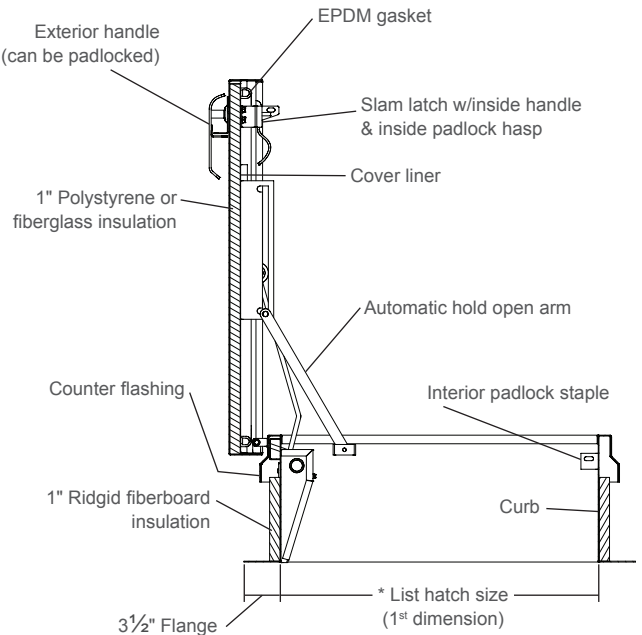
Lift Assist: Cover operation is assisted by enclosed heavy-duty Torsion Coil Spring

Latches: Slam latch with interior and exterior handles and padlock hasps.

Hardware: All hardware is zinc plated (stainless steel hardware optional)

Load Capacity:

- M: 70 psf
- RB, RC & RD: 40 psf



* Hatch sizing is based off inside curb dimensions

Size	Galvanized Steel Cover and Curb		Galvanized Steel Cover and Curb		Aluminum Cover, Galvanized Curb		Aluminum Cover and Curb	
	Model No.	Lbs.	Model No.	Lbs.	Model No.	Lbs.	Model No.	Lbs.
2'6" x 4'6"	M-2	265	RB-2	255	RC-2	174	RD-2	136

ROOF ACCESS HATCHES

PERSONNEL

SERVICE STAIR

SPECIFICATIONS

Material:

- M: 14 gauge galvanized steel cover and Curb
- RB: 14 gauge galvanized steel cover and Curb
- RC: .090 Aluminum Cover and 14 gauge galvanized steel Curb
- RD: .090 Aluminum Cover and Curb

Finish:

- Galvanized Steel: White Powder Coat
- Aluminum: Mill Finish

Cover: covers open easily to 90 degrees

- M & RB: 14 gauge galvanized steel exterior with 22 gauge galvanized steel liner bonded to core of 1" rigid polystyrene insulation (M Style) or 1" fiberglass insulation (RB Style).
- RC & RD: Mill finish .090 aluminum exterior with .063 aluminum liner with 1" fiberglass insulation.

Curb:

- M, RB & RC: 14 gauge galvanized steel with a 12" high curb, integral counterflashing, 3½" wide mounting flanges with pre-drilled holes and 1" exterior fiberboard insulation
- RD: Mill finish .090 aluminum with a 12" high curb, integral counterflashing, 3½" wide mounting flanges with pre-drilled holes and 1" exterior fiberboard insulation

Gasket: Extruded EPDM rubber gasket adhered to cover

Hinges: Steel Pintle Hinge

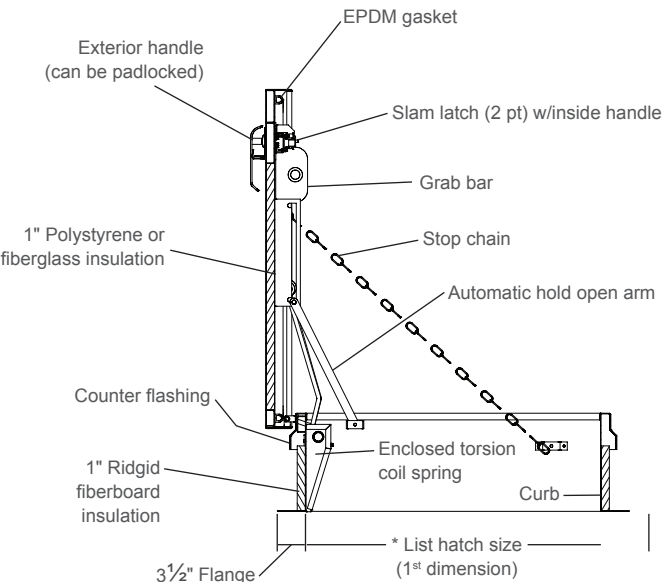
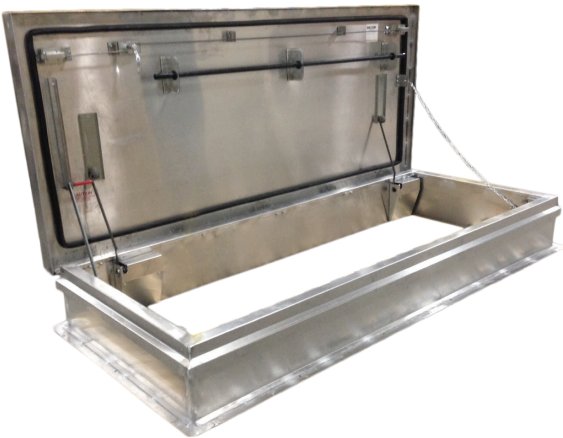
Lift Assist: Cover operation is assisted by enclosed heavy-duty Torsion Coil Spring

Latches: Slam latch with interior and exterior handles and padlock hasps.

Hardware: All hardware is zinc plated (stainless steel hardware optional)

Load Capacity:

- M: 70 psf
- RB, RC & RD: 40 psf



* Hatch sizing is based off inside curb dimensions

Size	Galvanized Steel Cover and Curb		Galvanized Steel Cover and Curb		Aluminum Cover, Galvanized Curb		Aluminum Cover and Curb	
	Model No.	Lbs.	Model No.	Lbs.	Model No.	Lbs.	Model No.	Lbs.
2'6" x 8'0"	M-3	395	RB-3	425	RC-3	307	RD-3	248

ROOF ACCESS HATCHES

PERSONNEL

EE SERIES

SPECIFICATIONS

Material:

- M: 14 gauge galvanized steel cover and Curb
- RD: .090 Aluminum Cover and Curb

Finish:

- Galvanized Steel: White Powder Coat
- Aluminum: Mill Finish

Cover: covers open easily to 90 degrees

- M: 14 gauge galvanized steel exterior with 22 gauge galvanized steel liner with 2" Polyisocyanurate insulation.
- RD: Mill finish .090 aluminum exterior with .063 aluminum liner with 2" Polyisocyanurate insulation

Curb:

- M: 14 gauge galvanized steel exterior with 22 gauge galvanized steel liner, a 12" high curb, integral counterflashing, 4½" wide mounting flanges with pre-drilled holes and 2" Polyisocyanurate insulation
- RD: Mill finish .090 aluminum exterior with .063 aluminum liner, a 12" high curb, integral counterflashing, 4½" wide mounting flanges with pre-drilled holes and 2" Polyisocyanurate insulation

Gasket: Extruded EPDM rubber gasket adhered to cover

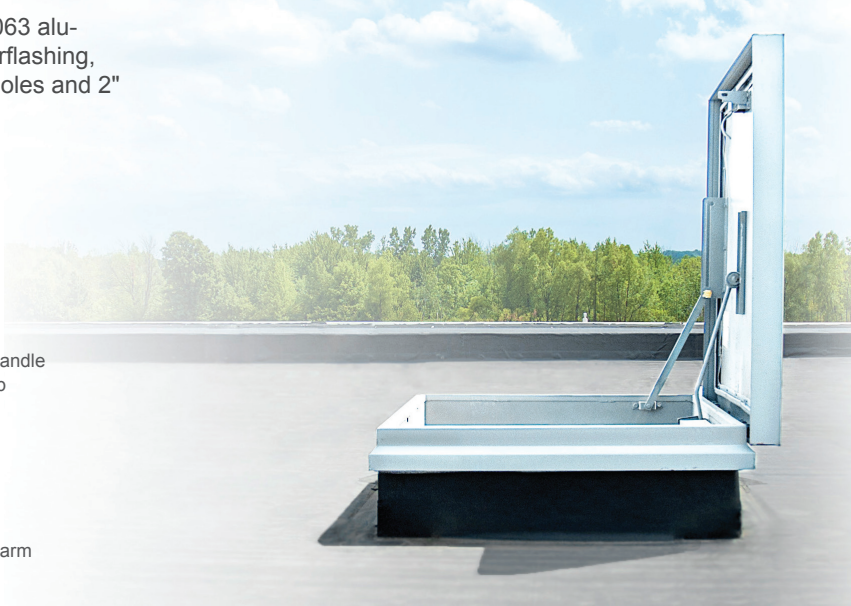
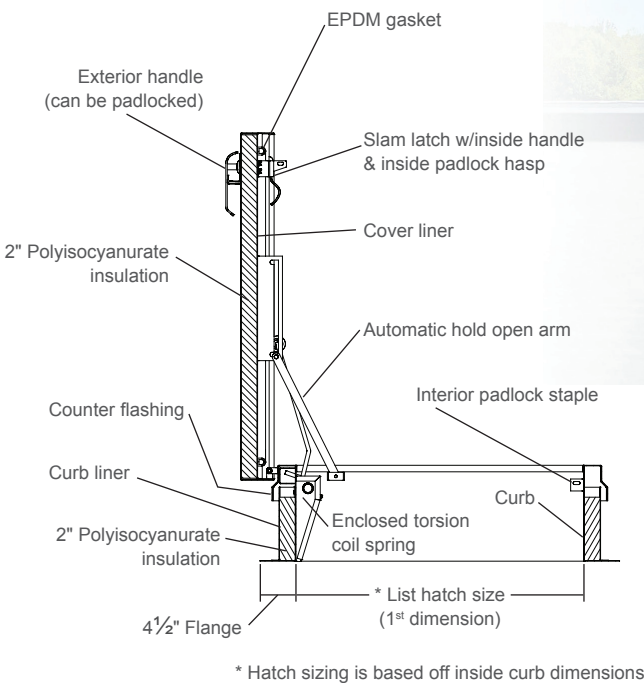
Hinges: Steel Pintle Hinge

Lift Assist: Cover operation is assisted by enclosed heavy-duty Torsion Coil Spring

Latches: Slam latch with interior and exterior handles and padlock hasp.

Hardware: All hardware is zinc plated (stainless steel hardware optional)

Load Capacity: 70 psf



Size	Galvanized Steel Cover and Curb		Aluminum Cover and Curb	
	Model No.	Lbs.	Model No.	Lbs.
3' 0" x 2' 6"	M-1 EE		RD-1 EE	
3' 0" x 3' 0"	M-3x3 EE		RD-3x3 EE	
4' 0" x 4' 0"	M-7 EE		RD-4X4 EE	
2' 6" x 4' 6"	M-2 EE		RD-2 EE	
2' 6" x 8' 0"	M-3 EE		RD-3 EE	

ROOF ACCESS HATCHES

PERSONNEL

THERMAL PRO 24

SPECIFICATIONS

Material: 0.090 Aluminum Cover and Curb

Finish: Mill Finish Aluminum

Cover: Covers open easily to 68 degrees for ladder access sizes and 85 degrees for stair access sizes. .090 aluminum exterior and interior components with 3" polyisocyanurate insulation with condensation liner and thermal breaks.

Curb: 0.090 aluminum liner, 12" high curb, integral counterflashing, 4½" wide mounting flanges with pre-drilled hole, 3" polyisocyanurate insulation, with condensation liner and thermal breaks.

Gasket:

- Extruded EPDM rubber gasket adhered to cover
- Custom EPDM rubber curb gasket for thermal breaking curb

Hinges: Zinc Plated Steel Pintle Hinges.

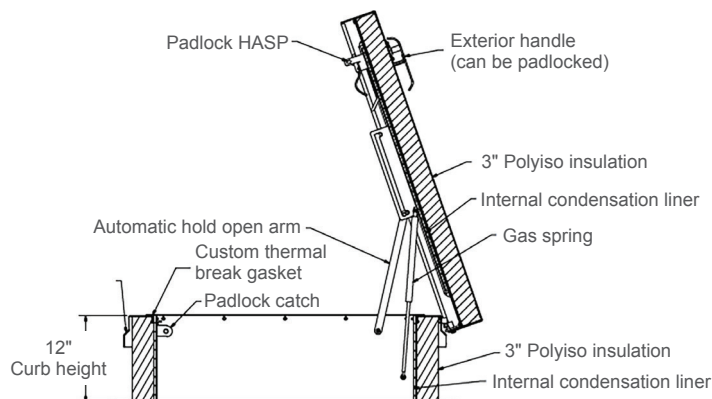
Lift Assist: Cover operation is assisted by enclosed heavy-duty gas spring.

Latches: Slam latch with interior and exterior handles and padlock hasp.

Hardware: All hardware is zinc plated.

Load Capacity: 70 psf

Thermal Resistance: Internal thermal breaking components and Patent Pending thermal impedance components, along with R-24 in insulation allows for extreme temperature change resistance.



Size	Aluminum Cover and Curb	
	Model No.	Part No.
3' 0" x 2' 6"	TP-1	3501-241-9
3' 0" x 3' 0"	TP-3X3	3501-242-9
4' 0" x 4' 0"	TP-4X4	3501-243-9
2' 6" x 4' 6"	TP-2	3501-244-9

ROOF ACCESS HATCHES

EQUIPMENT ACCESS – DOUBLE LEAF

SPECIFICATIONS

Material:

- RB: 14 gauge galvanized steel cover and Curb
- RC: .090 Aluminum Cover and 14 gauge galvanized steel Curb
- RD: .090 Aluminum Cover and Curb

Finish:

- Galvanized Steel: White Powder Coat
- Aluminum: Mill Finish

Cover:

- RB: 14 gauge galvanized steel exterior with 22 gauge galvanized steel liner with 1" fiberglass insulation
- RC & RD: Mill finish .090 aluminum exterior with .063 aluminum liner with 1" fiberglass insulation

Curb:

- RB & RC: 14 gauge galvanized steel with a 12" high curb, integral counterflashing, 3½" wide mounting flanges with pre-drilled holes and 1" exterior fiberboard insulation
- RD: Mill finish .090 aluminum with a 12" high curb, integral counterflashing, 3½" wide mounting flanges with pre-drilled holes and 1" exterior fiberboard insulation

Gasket: Extruded EPDM rubber gasket adhered to cover

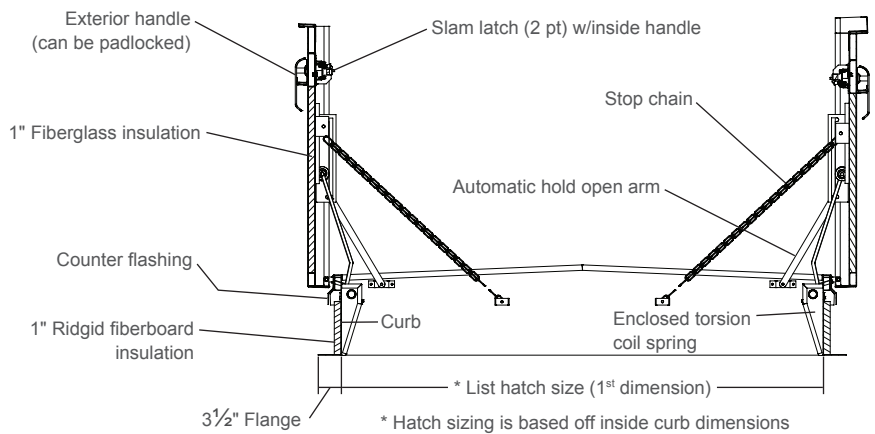
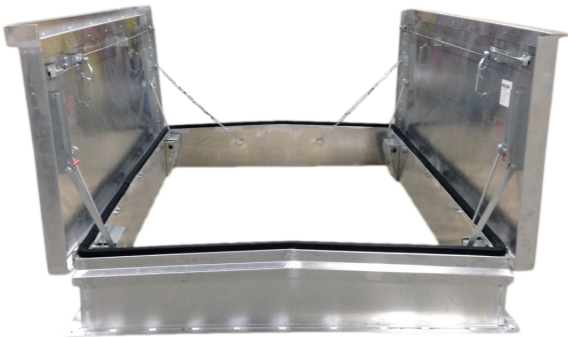
Hinges: Steel Pintle Hinge

Lift Assist: Cover operation is assisted by enclosed heavy-duty Torsion Coil Spring

Latches: Two-point slam latch system for tight, secure closure with exterior handles and padlock hasps

Hardware: All hardware is zinc plated (stainless steel hardware optional)

Load Capacity: 40 psf



Size	Galvanized Steel Cover and Curb		Aluminum Cover, Galvanized Curb		Aluminum Cover and Curb	
	Model No.	Lbs.	Model No.	Lbs.	Model No.	Lbs.
5'0" x 5'0"	RB-5X5		RC-5X5		RD-5X5	
6'0" x 6'0"	RB-6X6		RC-6X6	1220	RD-6X6	
8'0" x 8'0"			RC-6	1220	RD-6	1055

ROOF ACCESS HATCHES

RETROFIT SAFETY RAIL SYSTEMS

SAF-T-RAIL

SPECIFICATIONS

Benefits:

- Easily installs in minutes with non-penetrating attachments using standard tools
- Telescoping Rails that fit hatches from most manufacturers
- Installs on existing hatches with cap flashings from ANY manufacturer
- Durable/Sturdy Metal Fabrication
- Durable safety yellow powder coat to withstand the elements
- Structural aluminum square tubing
- 5 year warranty

OSHA Compliant:

- Meets OSHA fall protection standards 29 CFR 1910.23 and 1926.502 guarding for opening requirements and supports 200 lbs force
- Posts, top rail, mid-rails & gate made of structural aluminum square tubing
- Powder coated safety yellow rails
- Patent #US10501942B2

Notes:

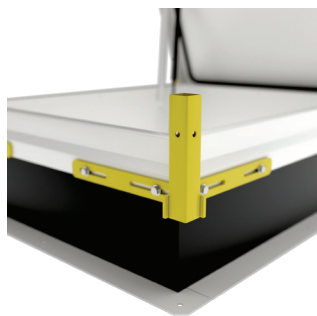
1. Displayed dimension are outside dimensions of hatch curb cap (nominal)



MSTR-75-110
For Service Stair
30.5" x 75.25" to 52" x 110"
(nominal)



MSTR-30-52
For Ladder Access
33" x 30.5" to 58" x 52"
(nominal)



Corner Brackets



Easy to install hinges



MSTR-48-70
For Ship Stair
30.5" x 48" to 52" x 70"
(nominal)

ROOF ACCESS HATCHES

UPRIGHT SAFETY BAR

SAFETY ACCESSORIES

SPECIFICATIONS

Benefits:

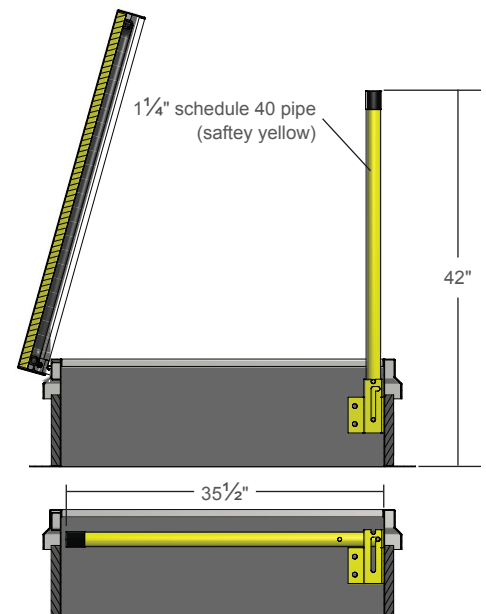
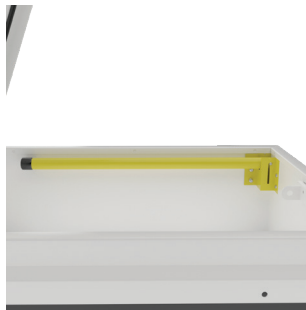
- The Milcor Upright Safety Bar is designed to assist in safe passage when exiting and entering the roof hatch. A heavy-duty, hinged steel mechanism allows the upward and downward movement of the bright yellow safety bar.
- No need to attach bar to center of ladder rungs. Milcor's Upright Safety Bar is designed to provide the safest way to exit and enter a roof hatch without restricting the opening or footing on the top rungs of the ladder.

Quality Design and Construction:

- Simple and safe lift-and-lock into place movement.
- Side location for safer and more convenient passage.
- Automatically locks when fully extended.
- Shipped as a separate unit. Also available assembled to roof hatch.
- Designed for hatches 4-foot and smaller on the ladder side.
- Designed to provide approximately 42" height above ladder.



Upright Safety Bar



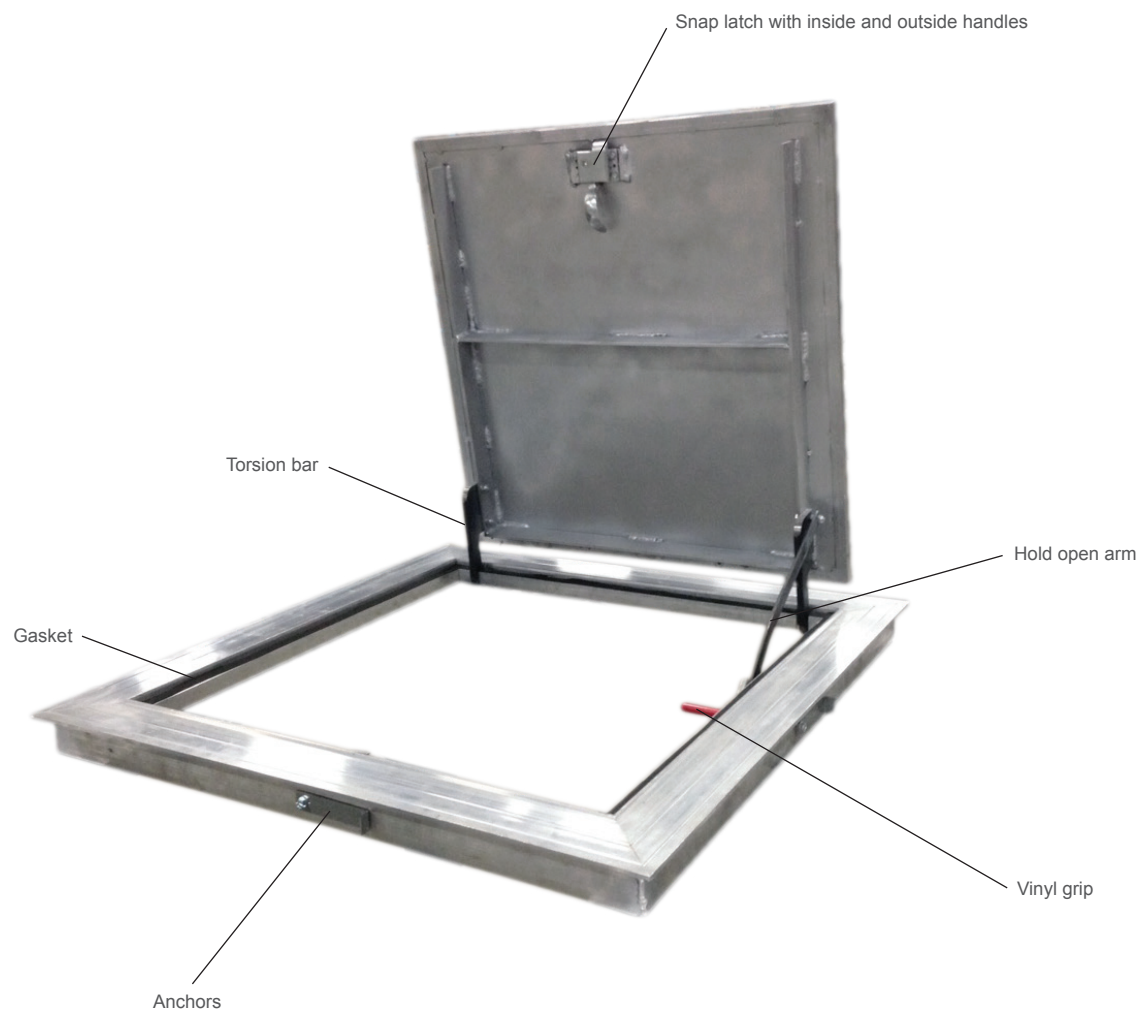
OPTIONS

Hatch Options

- Custom Sizes
- Metal Roofs
- Stainless Steel Hardware
- Custom cover and curb insulation types and thicknesses
- Motorized (single leaf only)
- Pitched
- Curb Heights
- Curb Liner
- Curb Mounted

FLOOR & SIDEWALK DOORS

PRODUCT FEATURE



Features & Benefits

- Heavy-Duty Construction to meet required loads
- Both Secure and Non-Secure Options Available

FLOOR & SIDEWALK DOORS

NON-SECURITY ALUMINUM FLOOR DOORS - STYLES F, T & Z

SPECIFICATIONS

Material:

- F: 1/4" Aluminum tread plate and extruded aluminum frame
- T: 1/8" Aluminum plate and extruded aluminum frame
- Z: 1/8" Aluminum recessed plate and formed aluminum frame

Finish:

- o Mill Finish

Cover:

- F: Diamond patterned safety tread plate designed to support minimum of 200 psf live load
- T: 1/8" Recessed smooth plate for floor tile to support minimum of 200 psf live load
- Z: Recessed smooth plate for terrazzo to support minimum of 200 psf live load

Frame:

- F & T: 1/8" Extruded aluminum frame w/ integral masonry anchors
- Z: 1/8" fully welded and mitered aluminum frame with welded masonry anchors

Gasket: 1/16" Neoprene gasket adhered to frame ledge

Handle: Lift Ring for easy access

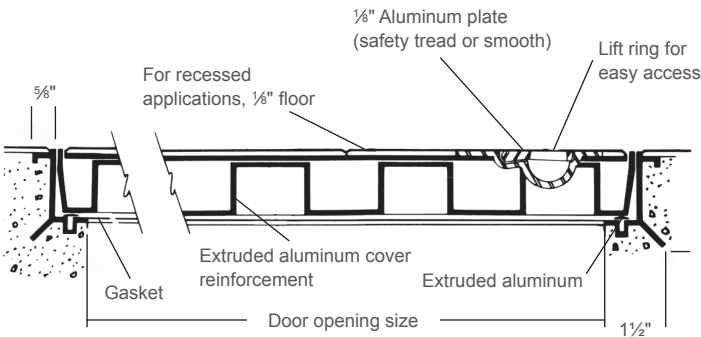
Hardware: Stainless steel



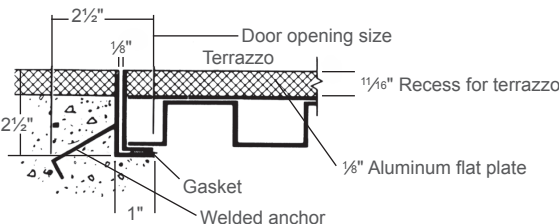
Diamond pattern



Flush Door Style (T Series)



Terrazzo Detail (Z Series)



Size	Flush Cover		Tile Cover		Terrazzo Cover	
	Model No.	Lbs.	Model No.	Lbs.	Model No.	Lbs.
2'0" x 2'0"	F-62	30	T-62	30	Z-62	40
2'6" x 2'6"	F-64	35	T-64	35	Z-64	45
3'0" x 2'6"	F-66	40	T-66	40	Z-66	50
3'0" x 3'0"	F-68	45	T-68	45	Z-68	55

FLOOR & SIDEWALK DOORS

SECURITY ALUMINUM FLOOR DOORS - STYLES F, T

SPECIFICATIONS

Material:

- F: ¼" Aluminum Tread Plate and extruded aluminum frame
- T: ¼" Aluminum Plate and extruded aluminum frame

Finish: Mill Finish

Cover:

- F: Diamond patterned safety tread plate designed to support 150 psf live load.
- T: ¼" Recessed smooth cover with extruded tile stop for floor tile to support 150 psf live load

Frame: F & T: ¼" Extruded aluminum frame with strap-type anchors bolted onto frame

Gasket: ¼" Neoprene gasket adhered to frame

Latch: Snap Latch

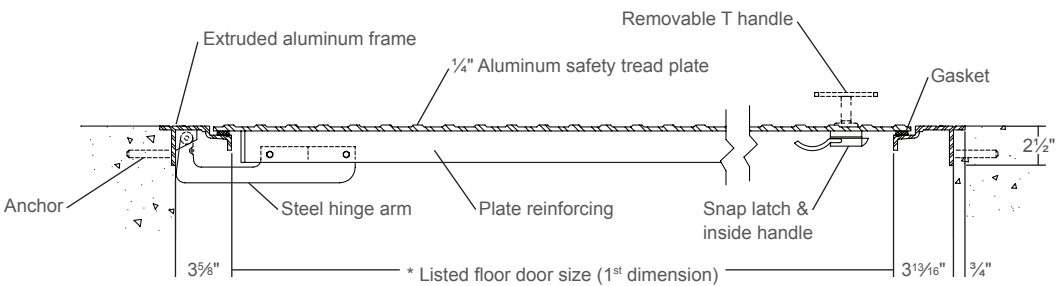
Handle: Inside handle and removable outside T handle

Lift Assistance: Torsion Bar

Hardware: Zinc plated (stainless steel optional)



Diamond pattern



No. of Leafs	Size	Flush Cover		Tile Cover	
		Model No.	Lbs.	Model No.	Lbs.
Single-Leaf	2'0" x 2'0"	F-2424	60	T-2424	66
	2'6" x 2'6"	F-3030	75	T-3030	85
	3'0" x 2'6"	F-3630	85	T-3630	95
	3'0" x 3'0"	F-3636	95	T-3636	106
Double-Leaf	4'0" x 4'0"	F-4848	160	T-4848	180
	4'0" x 6'0"	F-4872	220	T-4872	246
	5'0" x 5'0"	F-6060	230	T-6060	258

FLOOR & SIDEWALK DOORS

STEEL AND ALUMINUM - STYLES GA AND GD

SIDEWALK DOORS

SPECIFICATIONS

Material:

- GA: ¼" Steel Tread Plate and ¼" extruded aluminum frame
- GD: ¼" Aluminum Tread Plate and ¼" extruded aluminum frame

Finish:

- GA: Grey Powder Coat
- GD: Mill Finish

Cover:

- GA: Steel Diamond patterned safety tread plate designed to support 300 psf live load.
- GD: Aluminum Diamond patterned safety tread plate designed to support 300 psf live load.

Frame: GA & GD: ¼" Extruded aluminum frame with integral masonry anchor. Frame construction contains drainage gutter around perimeter with 1½" drain coupling to connect with interior drain

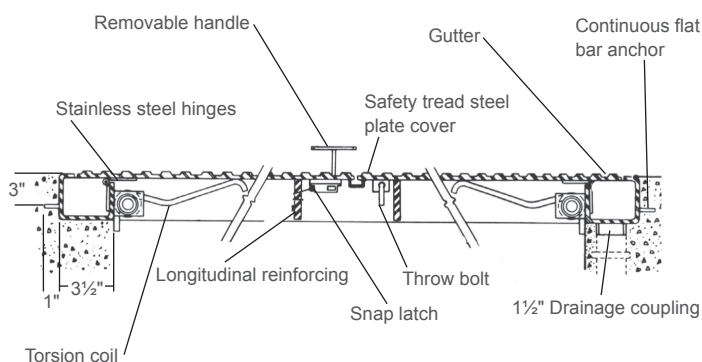
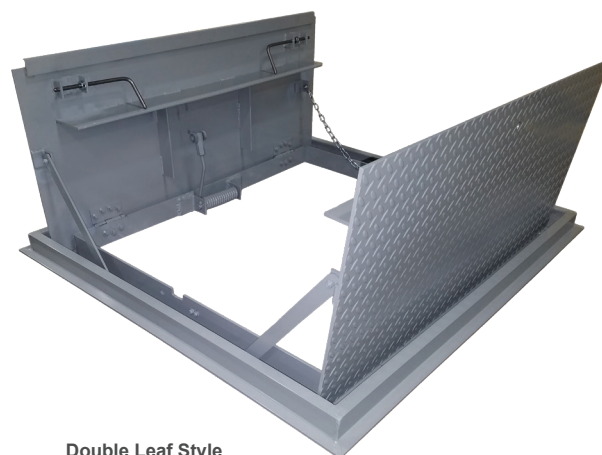
Latch:

- Single Leaf: Single Snap Latch
- Double Leaf: Two-point snap latch with throw bolt on inactive leaf

Handle: Inside handle and removable outside T handle

Lift Assistance: Torsion Coil

Hardware: Stainless steel



For highly corrosive environments, zinc flame-sprayed and painted option is available for unit.

No. of Leafs	Size	Prime Painted Steel		Aluminum	
		Model No.	Lbs.	Model No.	Lbs.
Single-Leaf	2'0" x 2'0"	GA-1	170	GD-1*	75
	2'6" x 2'6"	GA-2	220	GD-2*	96
	3'0" x 2'6"	GA-3	257	GD-3	102
	3'0" x 3'0"	GA-4	286	GD-4	113
Double-Leaf	3'6" x 3'6"	GA-5	321	GD-5	134
	2'10" x 3'4"	GA-6	278	GD-6*	129
	3'4" x 3'10"	GA-7	348	GD-7*	150
	3'10" x 3'10"	GA-8	440	GD-8*	188
	4'0" x 4'0"	GA-9	482	GD-9*	198
	4'0" x 6'0"	GA-10	642	GD-10	268
	5'0" x 5'0"	GA-11	706	GD-11	27

*Torsion spring not provided on aluminum sidewalk doors in the following standard and special sizes: single leaf type- 2'0" x 2'0" through 4'6", 2'6" x 2'6", double leaf type- 2'10" x 3'4" through 5'6", 3'10" x 3'10" through 4'0" x 4'0".

FLOOR & SIDEWALK DOORS

OPTIONS

Floor & Sidewalk Door Options

- Custom Sizes
- Stainless Steel Hardware
- Zinc flame-sprayed for highly corrosive environments



BUILD FOR THE FUTURE

Customer Service and Support:

Airmate (USA).....	800.992.8368
Airmate (CAN)	888.735.5475
Ameriflow	800.252.8467
Amerivent (Retail)	800.252.8467
Amerivent (Hearth & Wholesale)	800.423.4270
Amerivent (Support).....	800.748.0392
AMPCO (USA)	800.669.3269
AMPCO (CAN).....	888.735.5475
Builder's Best	903.586.8283
Duravent	800.835.4429
Hart & Cooley	800.433.6341
Hart & Cooley (Support)	800.748.0392
Heatfab (USA).....	800.772.0739
Heatfab (CAN)	800.848.2149
Lima.....	800.423.4270
Milcor	800.774.5240
Portals Plus.....	800.774.5240
RPS.....	800.624.8642
Security Chimney (USA).....	800.361.4909
Security Chimney (CAN)	800.667.3387
Selkirk (USA) Residential	800.992.8368
Selkirk (USA) Commercial.....	800.848.2149
Selkirk (USA) Support.....	800.748.0392
Selkirk (CAN)	888.735.5475

Manufacturing & Distribution Centers:

CANADA	
Nobel, ON	Manufacturing
Laval, QC	Manufacturing
Prescott, ON	Distribution
USA	
Grand Rapids, MI	Center of Excellence
Dallas, TX	Distribution
Englewood, OH	Distribution
Jacksonville, TX	Manufacturing & Distribution
Huntsville, AL	Manufacturing & Distribution
Las Vegas, NV	Distribution
Turner Falls, MA	Manufacturing & Distribution
Vacaville, CA	Manufacturing
MEXICO	
Ojinaga, MX	Manufacturing
Mexicali, MX	Manufacturing

Corporate Headquarters:

Duravent Group
28 W. Adams, Suite 1810
Detroit, MI 48226
Tel: 800.835.4429
Email: info@duraventgroup.com
www.duraventgroup.com

MILCOR®

duravent[™]
GROUP

BUILD FOR THE FUTURE

www.duraventgroup.com



For warranty information:
Scan this QR code or visit
www.duraventgroup.com/warranties

©2025 Duravent Group. Milcor is a copyrighted
trademark of the Duravent Group. All rights reserved.
MIL_RoofHatches_CT-001E_07-25