

# MILCOR<sup>®</sup>

BY duravent<sup>™</sup>

28 West Adams, Suite 1810  
Detroit, MI 48226

## **Big Smoky & STC-50 Heat & Smoke Vent Closing Instructions**

### **Note for McCabe Link equipped H&S vents:**

If your McCabe link has been tripped via a supplied voltage, you will first need to reset the McCabe Link and mechanism before proceeding to closing the unit. Please refer to our McCabe Link reset instructions before proceeding.

**Note:** 3 or 4 people may be needed to fully close the covers.

1. First you will need to pull the center pull handle to move the hold open channels up and out of the way of the gas springs.



*Figure 1: Hold Open Channel Release Handle location*

2. While holding the hold open channels up slowly push on the center of each cover to close them until they are latched shut. Latch shut each cover one at a time.

**BUILD FOR THE FUTURE**

3. Finally, you will need to ensure the covers are latched shut to the second latch position. The latch catch has two positions of engagement. The first position will hold the cover closed for a short time but is not sufficient to keep the units closed for long periods of time. To ensure the latch catch has achieved the second position measure the distance from the bottom of the gutter to the top of the cover at the mid-point of the of the cover. This measurement should be  $4 \frac{15}{16}$ " for STC-50 H&S vents and  $3 \frac{7}{8}$ " for Big Smoky H&S Vents. When able, the latches can also be inspected from the underside to ensure the latches are engaged properly. When the latch is at the second position the top of the latch's claws should be nearly touching.



*Figure 2: Second Latch Position Installed*



*Figure 3: Incorrect 1st Latch Position*

*Figure 4: Correct 2nd Latch Position*



Figure 5: Measurement Location

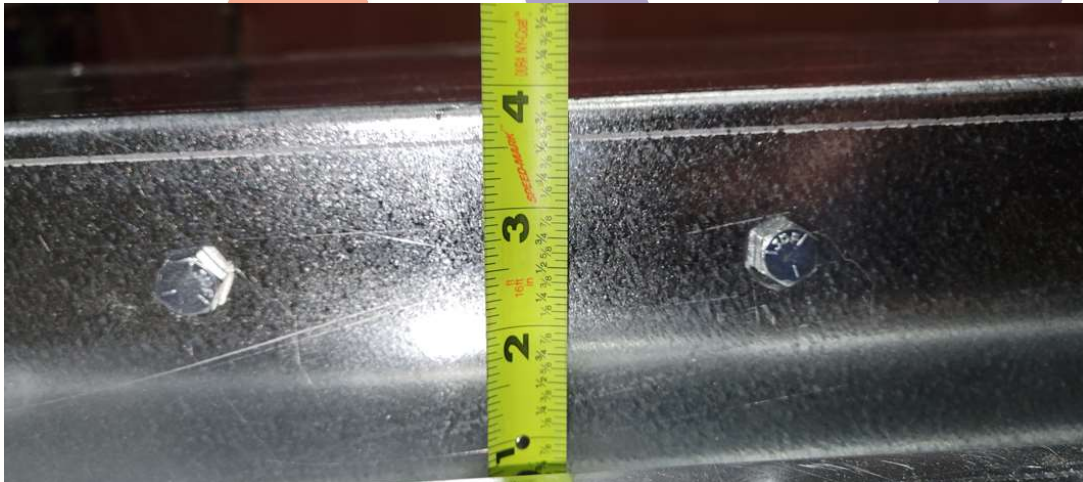


Figure 6: Big Smoky Latch Position Measurement



Figure 7: STC-50 Latch Position Measurement