

MILCOR®

BY duravent™

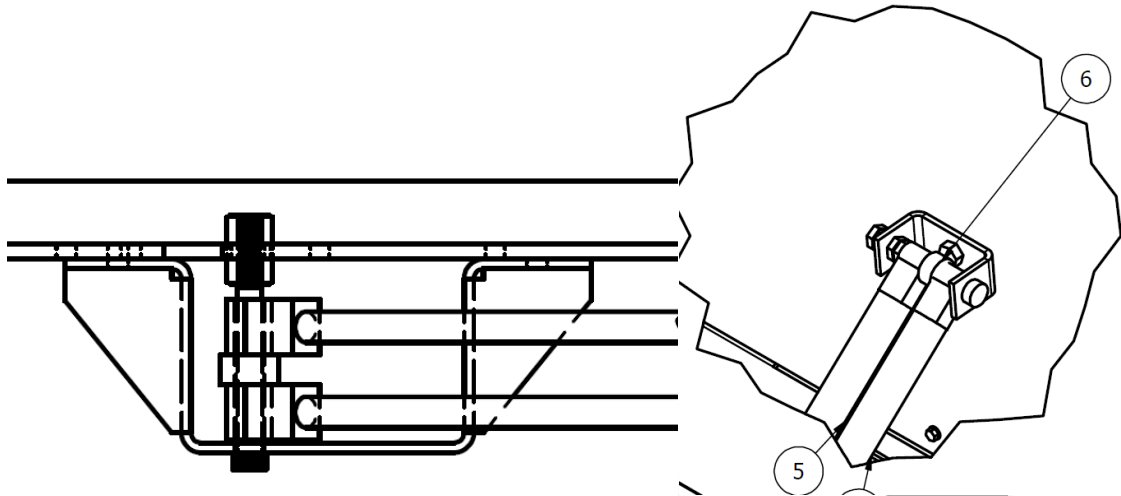
28 West Adams, Suite 1810
Detroit, MI 48226

Gas Spring H&S Vent Manual Winch Gas Spring Installation

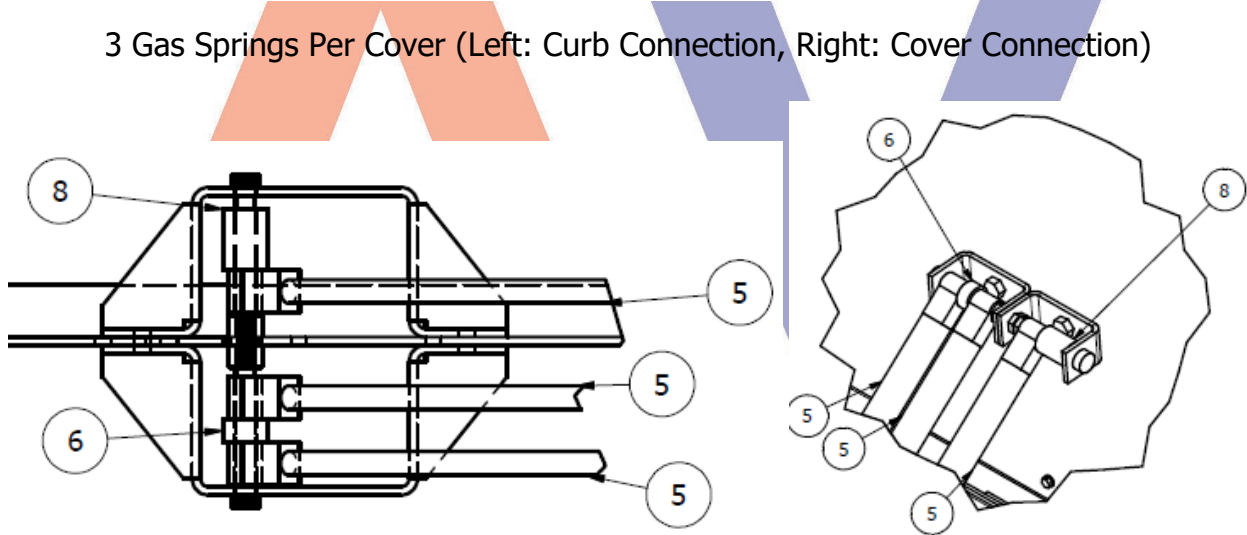
1. First open the cover manually with one person on each end of the cover. Open the cover to get to the manual winch, gas springs & hardware inside.
2. Next the covers can be carefully closed manually, and the winch can be installed in the desired location inside the building. Keep in mind that extra pulleys may be needed to get the cable to run from the smoke vent to your manual winch in the desired way. These extra pulleys will be supplied by others.
3. Manually open the covers again, one at a time as described in step 1. This time attach the gas springs to the curb as seen in the pictures below. There will be a coupler in the middle support where both shoulder bolts will meet and screw into. Please follow the order of gas springs and spacers seen below depending on how many gas springs your H&S vent requires. This will be done for each cover one at a time. Once this is complete the covers will be open until the cable is routed to the manual winch and the covers are pulled closed using the manual winch.
4. Next the cable inside the hatch should have one side attached to the fusible link mechanism mounted on the inside wall of the smoke vent. The cable runs through the H&S vent traveling through many internal pulleys and finishes by traveling through the bottom of the vent to the manual winch mounted inside the building. Make sure the cable is correctly positioned on the pulleys and hasn't slipped off track. Once the cable is connected to the manual winch the winch can be used to crank the vent covers closed and open.

Gas Spring & Spacer Configuration:

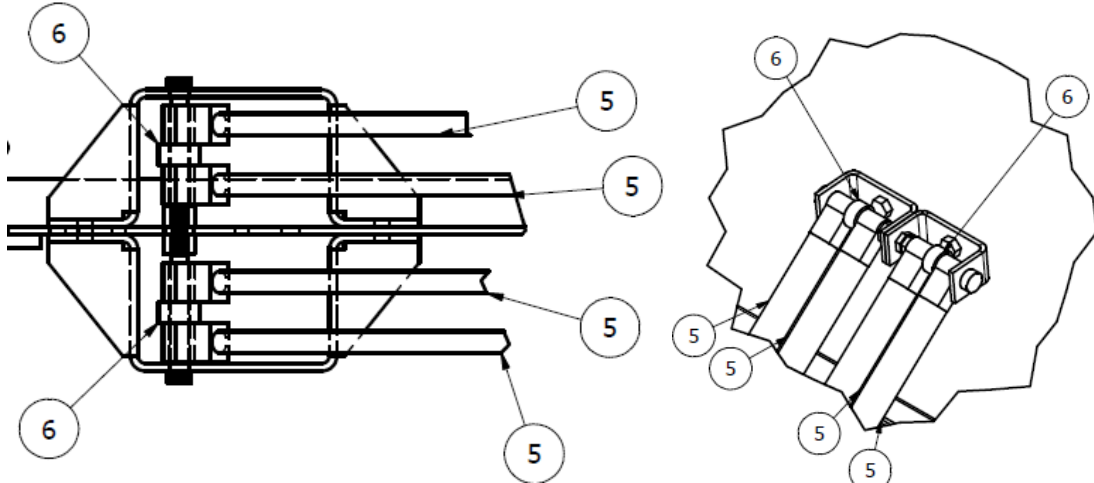
2 Gas Springs Per Cover (Left: Curb Connection, Right: Cover Connection)



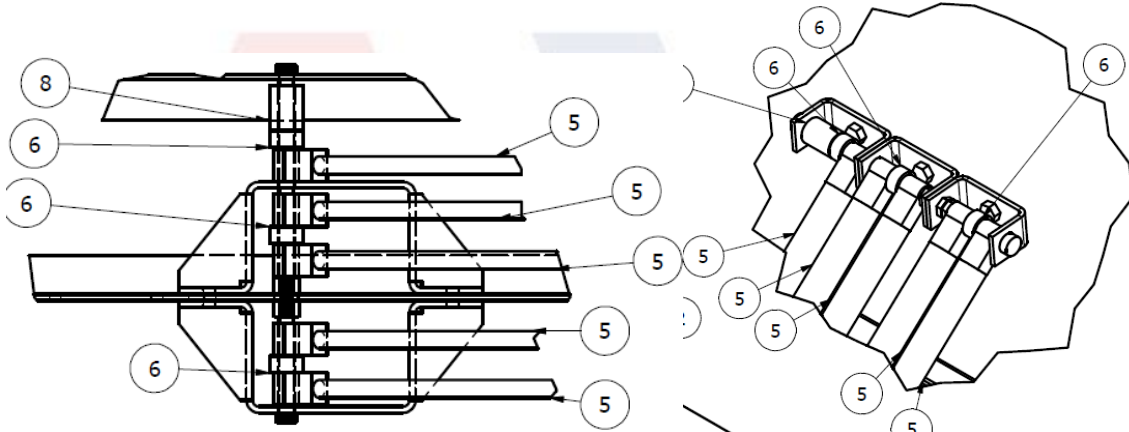
3 Gas Springs Per Cover (Left: Curb Connection, Right: Cover Connection)



4 Gas Springs Per Cover (Left: Curb Connection, Right: Cover Connection)



5 Gas Springs Per Cover (Left: Curb Connection, Right: Cover Connection)



6 Gas Springs Per Cover (Left: Curb Connection, Right: Cover Connection)

