

ROOF HATCHES  
HEAT AND SMOKE VENTS  
SIDEWALK AND FLOOR DOORS



# WHERE HIGH EFFICIENCY IS THE STANDARD

## EXPERIENCE

Milcor brings over 105 years of experience in the manufacturing of roof hatches, smoke vents and floor doors. Our years of experience gives us the knowledge to provide top of the line, dependable products to our customers.

## ENGINEERING

Every Milcor vent, hatch or door product is engineered to meet the specific, in-use requirements of the application for which it was designed.

## SELECTION

The Milcor product line contains all of the essential items to meet your construction needs.

## ON-TIME DELIVERY

Milcor satisfies your need for on-time delivery to meet your demanding schedule.

## QUALITY

Milcor smoke vents, roof hatches and floor doors provide superior performance features unequaled in the industry.

## WARRANTY

Milcor warrants all goods sold to be free from defects in workmanship and, not but limits liability to five years from date of shipment and expressly to the replacement of goods not complying with this warranty; or, at our election, a credit to original purchaser for the original purchase price paid less 1/60<sup>th</sup> of the price for each month elapsed from the original invoice date to the date of claim against this warranty.

Electric motors, special finishes and any other optional special components required shall be warranted separately by the manufacturers of those products.

**MILCOR**<sup>®</sup>  
BY duravent<sup>™</sup>

800.774.5240

© 2022 Duravent Group. All rights reserved.

# INDEX

## ROOF ACCESS HATCHES

5

### EE Hatch

6

Milcor's Energy Efficient series hatches have an R-value of 12 and include 2 inches of polyisocyanurate insulation in both the curb and cover.

### M-1

7

The Milcor M-1 Hatch is our most popular access hatch. The M-1 is FL product approved carrying a 70 psf and is powder coated to withstand the element.

### Personnel

8-11

Milcor's Personnel Roof Access Hatches provide convenient access to the building's roof. These include hatches that accommodate ladder, ship stair, service stair access and thermal resistance.

### Equipment

12

Larger Double Leaf Hatches to allow for equipment to be dropped into or loaded out of the building.

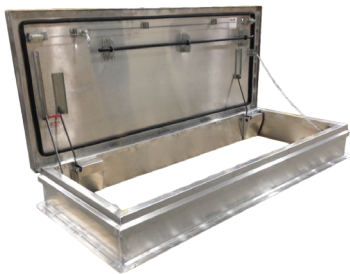
### Safety Products

13-14

\*Safety Rail Systems \*Upright Safety Bar

### Hatch Options

15



## SMOKE VENTS

16

### Big Smoky

17

Larger sized smoke vents. UL-793 Listed and to provide fire protection.

### Acoustical

18

Acoustically STC 50 to meet the buildings specific needs. STC 50 is UL-793 Listed to provide fire protection.

### Flat Panel Skylight

19

Smoke Vent with flat polycarbonate panels to allow for the admittance of natural light into the building.

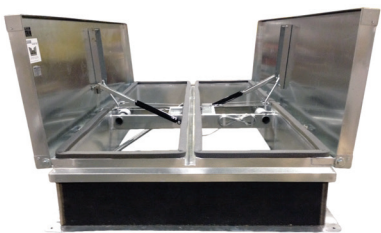
### Domed Skylight

20

Smoke Vent with polycarbonate domes to allow for the admittance of natural light into the building. UL-793 Listed to provide fire protection.

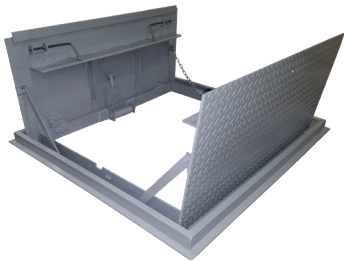
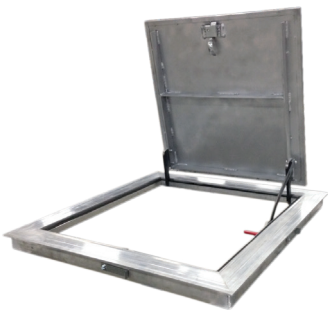
### Smoke Vent Options

21



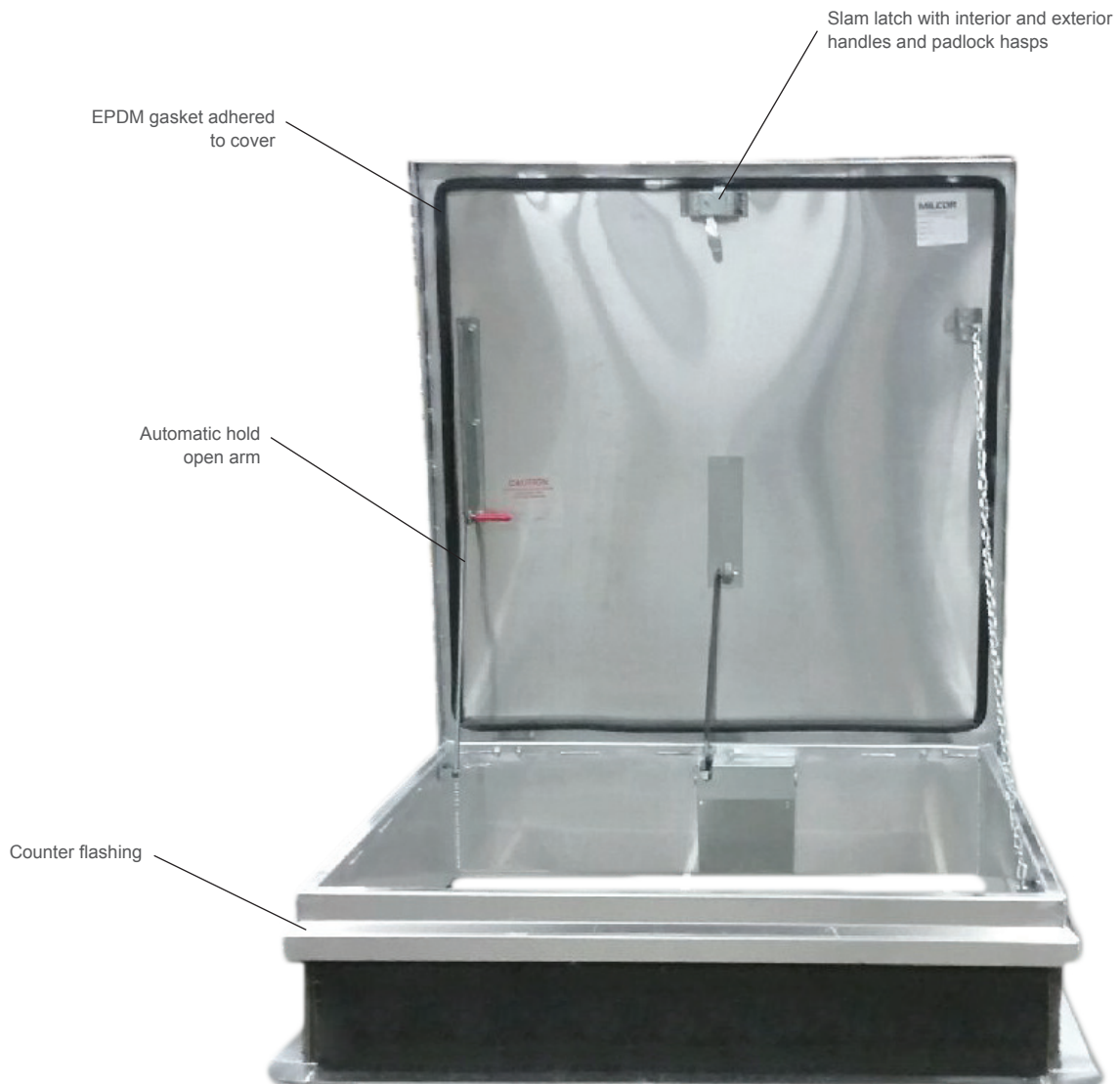
INDEX  
CONTINUED

<b>FLOOR &amp; SIDEWALK DOORS</b>	<b>22</b>
<b>Non-Security</b>	<b>23</b>
Equipped with lift ring for easy access for use in non-secure environments.	
<b>Security</b>	<b>24</b>
Snap latches with removable top handles prevent undesired access.	
<b>Sidewalk</b>	<b>25</b>
For Exterior Access Applications or where interior moisture conditions require drainage provisions.	
<b>Floor &amp; Sidewalk Door Options</b>	<b>26</b>



# ROOF ACCESS HATCHES

## PRODUCT FEATURE



### Features & Benefits

- Fully insulated cover and curb
- High load capacity reaching up to 70 psf
- Interior and Exterior Padlock Hasps as standard
- Lift Assistance for easy opening

# ROOF ACCESS HATCHES

## EE SERIES

### SPECIFICATIONS

**Material:**

- M: 14 gauge galvanized steel cover and Curb
- RD: .090 Aluminum Cover and Curb

**Finish:**

- Galvanized Steel: White Powder Coat
- Aluminum: Mill Finish

**Cover:** covers open easily to 90 degrees

- M: 14 gauge galvanized steel exterior with 22 gauge galvanized steel liner with 2" Polyisocyanurate insulation.
- RD: Mill finish .090 aluminum exterior with .063 aluminum liner with 2" Polyisocyanurate insulation

**Curb:**

- M: 14 gauge galvanized steel exterior with 22 gauge galvanized steel liner, a 12" high curb, integral counterflashing, 4½" wide mounting flanges with pre-drilled holes and 2" Polyisocyanurate insulation
- RD: Mill finish .090 aluminum exterior with .063 aluminum liner, a 12" high curb, integral counterflashing, 4½" wide mounting flanges with pre-drilled holes and 2" Polyisocyanurate insulation

**Gasket:** Extruded EPDM rubber gasket adhered to cover

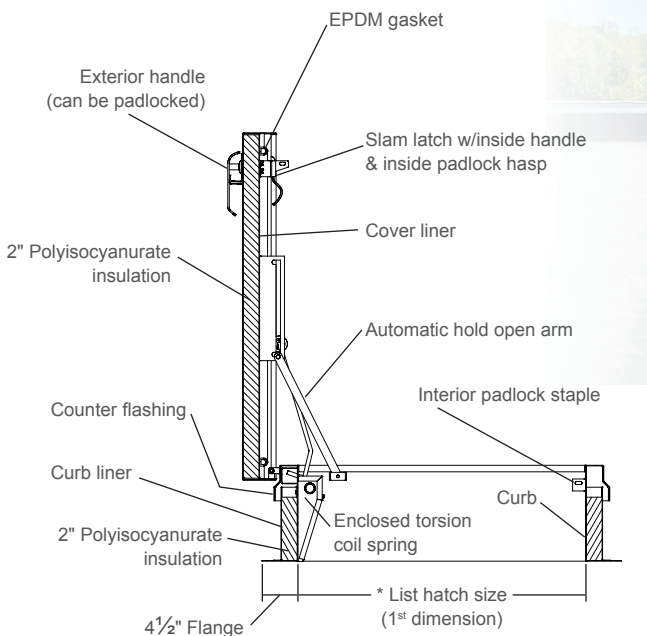
**Hinges:** Steel Pintle Hinge

**Lift Assist:** Cover operation is assisted by enclosed heavy-duty Torsion Coil Spring

**Latches:** Slam latch with interior and exterior handles and padlock hasp.

**Hardware:** All hardware is zinc plated (stainless steel hardware optional)

**Load Capacity:** 70 psf



\* Hatch sizing is based off inside curb dimensions



Size	Galvanized Steel Cover and Curb		Aluminum Cover and Curb	
	Model No.	Lbs.	Model No.	Lbs.
3' 0" x 2' 6"	M-1 EE		RD-1 EE	
3' 0" x 3' 0"	M-3x3 EE		RD-3x3 EE	
4' 0" x 4' 0"	M-7 EE		RD-4X4 EE	
2' 6" x 4' 6"	M-2 EE		RD-2 EE	
2' 6" x 8' 0"	M-3 EE		RD-3 EE	



# ROOF ACCESS HATCHES

## M-1 HATCH

### SPECIFICATIONS

**Material:** 14 gauge galvanized steel cover and Curb

**Finish:** Galvanized Steel: White Powder Coat

**Cover:**

- 14 gauge galvanized steel exterior with 22 gauge galvanized steel liner bonded to core of 1" rigid polystyrene insulation.

**Curb:** 14 gauge galvanized steel with a 12" high curb, integral counterflashing, 3½" wide mounting flanges with pre-drilled holes and 1" exterior fiberboard insulation

**Gasket:** Extruded EPDM rubber gasket adhered to cover

**Hinges:** Integrated Plate Hinge

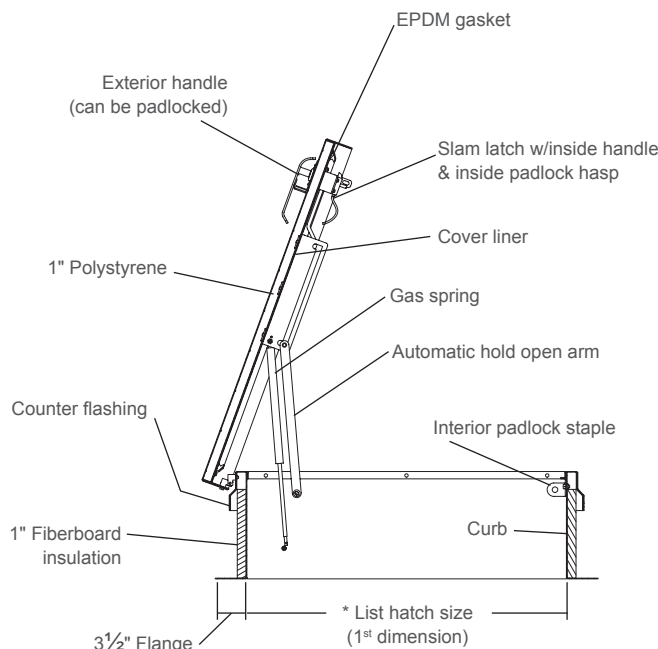
**Lift Assist:** Cover operation is assisted by gas spring

**Latches:** Slam latch with interior and exterior handles and padlock hasps

**Hardware:** All hardware is zinc plated (stainless steel hardware optional)

**Load Capacity:** 70 psf

**Certifications:** Florida Product Approval: FL 16737-R2



Size	Galvanized Steel Cover and Curb
	Model No.
3' 0" x 2' 6"	M-1

# ROOF ACCESS HATCHES

PERSONNEL

## LADDER ACCESS

### SPECIFICATIONS

#### Material:

- M: 14 gauge galvanized steel cover and curb
- RB: 14 gauge galvanized steel cover and curb
- RC: .090 Aluminum cover and 14 gauge galvanized steel curb
- RD: .090 Aluminum cover and curb

#### Finish:

- Galvanized Steel: White Powder Coat
- Aluminum: Mill Finish

#### Cover:

- covers open easily to 90 degrees
- M & RB: 14 gauge galvanized steel exterior with 22 gauge galvanized steel liner bonded to core of 1" rigid polystyrene insulation (M Style) or 1" fiberglass insulation (RB Style).
- RC & RD: Mill finish .090 aluminum exterior with .063 aluminum liner with 1" fiberglass insulation. (RD-1 uses 1" Styrofoam insulation)

#### Curb:

- M, RB & RC: 14 gauge galvanized steel with a 12" high curb, integral counterflashing, 3½" wide mounting flanges with pre-drilled holes and 1" exterior fiberboard insulation
- RD: Mill finish .090 aluminum with a 12" high curb, integral counterflashing, 3½" wide mounting flanges with pre-drilled holes and 1" exterior fiberboard insulation

**Gasket:** Extruded EPDM rubber gasket adhered to cover

**Hinges:** Steel Pintle Hinge

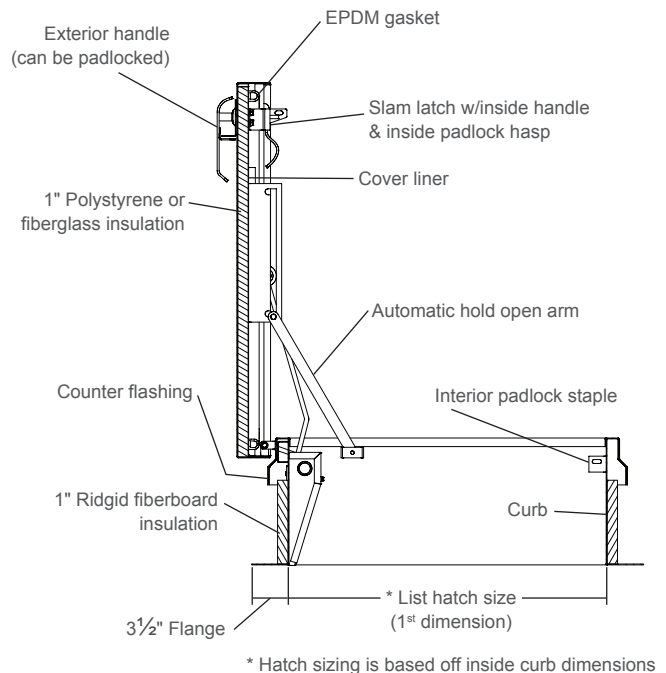
**Lift Assist:** Cover operation is assisted by enclosed heavy-duty Torsion Coil Spring

**Latches:** Slam latch with interior and exterior handles and padlock hasps.

**Hardware:** All hardware is zinc plated (stainless steel hardware optional)

#### Load Capacity:

- M & RD-1: 70 psf
- RB, RC & RD-3x3: 40 psf



Size	Galvanized Steel Cover and Curb		Galvanized Steel Cover and Curb		Aluminum Cover, Galvanized Curb		Aluminum Cover and Curb	
	Model No.	Lbs.	Model No.	Lbs.	Model No.	Lbs.	Model No.	Lbs.
3'0" x 2'6"			RB-1	205	RC-1	160	RD-1	125
3'0" x 3'0"	M-3x3	254					RD-3x3	155
4'0" x 4'0"	M-7	365	RB-4x4	365			RD-4x4	200



# ROOF ACCESS HATCHES

PERSONNEL

## SHIP STAIR

### SPECIFICATIONS

**Material:**

- M: 14 gauge galvanized steel cover and Curb
- RB: 14 gauge galvanized steel cover and Curb
- RC: .090 Aluminum Cover and 14 gauge galvanized steel Curb
- RD: .090 Aluminum Cover and Curb

**Finish:**

- Galvanized Steel: White Powder Coat
- Aluminum: Mill Finish

**Cover:** Covers open easily to 90 degrees

- M & RB: 14 gauge galvanized steel exterior with 22 gauge galvanized steel liner bonded to core of 1" rigid polystyrene insulation (M Style) or 1" fiberglass insulation (RB Style)
- RC & RD: Mill finish .090 aluminum exterior with .063 aluminum liner with 1" fiberglass insulation

**Curb:**

- M, RB & RC: 14 gauge galvanized steel with a 12" high curb, integral counterflashing, 3½" wide mounting flanges with pre-drilled holes and 1" exterior fiberboard insulation
- RD: Mill finish .090 aluminum with a 12" high curb, integral counterflashing, 3½" wide mounting flanges with pre-drilled holes and 1" exterior fiberboard insulation

**Gasket:** Extruded EPDM rubber gasket adhered to cover

**Hinges:** Steel Pintle Hinge

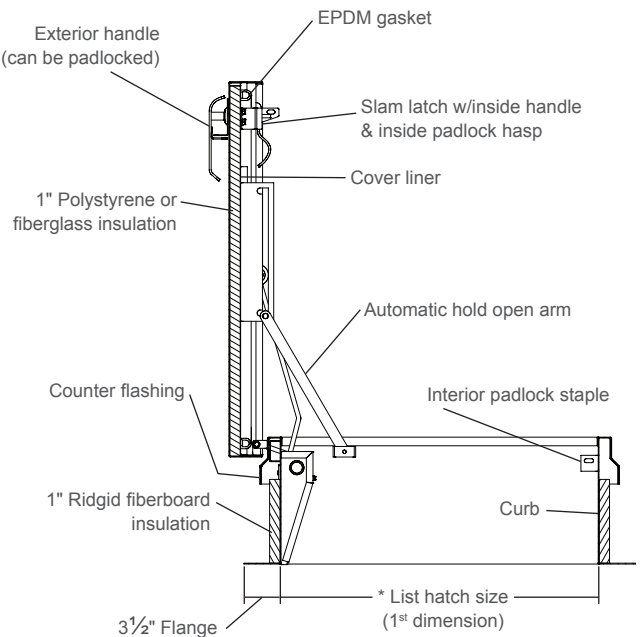
**Lift Assist:** Cover operation is assisted by enclosed heavy-duty Torsion Coil Spring

**Latches:** Slam latch with interior and exterior handles and padlock hasps.

**Hardware:** All hardware is zinc plated (stainless steel hardware optional)

**Load Capacity:**

- M: 70 psf
- RB, RC & RD: 40 psf



\* Hatch sizing is based off inside curb dimensions

Size	Galvanized Steel Cover and Curb		Galvanized Steel Cover and Curb		Aluminum Cover, Galvanized Curb		Aluminum Cover and Curb	
	Model No.	Lbs.	Model No.	Lbs.	Model No.	Lbs.	Model No.	Lbs.
2'6" x 4'6"	M-2	265	RB-2	255	RC-2	174	RD-2	136

# ROOF ACCESS HATCHES

PERSONNEL

## SERVICE STAIR

### SPECIFICATIONS

**Material:**

- M: 14 gauge galvanized steel cover and Curb
- RB: 14 gauge galvanized steel cover and Curb
- RC: .090 Aluminum Cover and 14 gauge galvanized steel Curb
- RD: .090 Aluminum Cover and Curb

**Finish:**

- Galvanized Steel: White Powder Coat
- Aluminum: Mill Finish

**Cover:** covers open easily to 90 degrees

- M & RB: 14 gauge galvanized steel exterior with 22 gauge galvanized steel liner bonded to core of 1" rigid polystyrene insulation (M Style) or 1" fiberglass insulation (RB Style).
- RC & RD: Mill finish .090 aluminum exterior with .063 aluminum liner with 1" fiberglass insulation.

**Curb:**

- M, RB & RC: 14 gauge galvanized steel with a 12" high curb, integral counterflashing, 3½" wide mounting flanges with pre-drilled holes and 1" exterior fiberboard insulation
- RD: Mill finish .090 aluminum with a 12" high curb, integral counterflashing, 3½" wide mounting flanges with pre-drilled holes and 1" exterior fiberboard insulation

**Gasket:** Extruded EPDM rubber gasket adhered to cover

**Hinges:** Steel Pintle Hinge

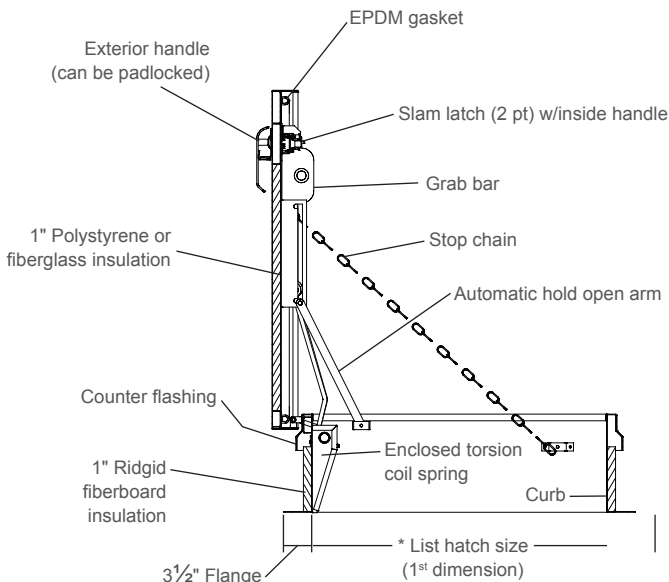
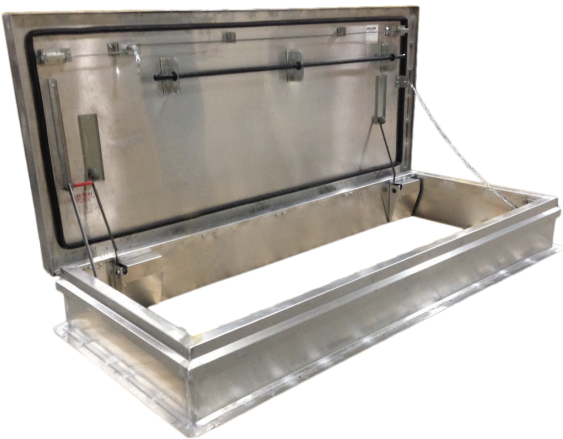
**Lift Assist:** Cover operation is assisted by enclosed heavy-duty Torsion Coil Spring

**Latches:** Slam latch with interior and exterior handles and padlock hasps.

**Hardware:** All hardware is zinc plated (stainless steel hardware optional)

**Load Capacity:**

- M: 70 psf
- RB, RC & RD: 40 psf



\* Hatch sizing is based off inside curb dimensions

Size	Galvanized Steel Cover and Curb		Galvanized Steel Cover and Curb		Aluminum Cover, Galvanized Curb		Aluminum Cover and Curb	
	Model No.	Lbs.	Model No.	Lbs.	Model No.	Lbs.	Model No.	Lbs.
2'6" x 8'0"	M-3	395	RB-3	425	RC-3	307	RD-3	248

# ROOF ACCESS HATCHES

PERSONNEL

## THERMAL PRO 24

### SPECIFICATIONS

**Material:** 0.090 Aluminum Cover and Curb

**Finish:** Mill Finish Aluminum

**Cover:** Covers open easily to 68 degrees for ladder access sizes and 85 degrees for stair access sizes. .090 aluminum exterior and interior components with 3" polyisocyanurate insulation with condensation liner and thermal breaks.

**Curb:** 12" or 18" curb height, 0.090 aluminum liner, integral counterflashing, 4½" wide mounting flanges with pre-drilled hole, 3" polyisocyanurate insulation, with condensation liner and thermal breaks.

**Gasket:**

- Extruded EPDM rubber gasket adhered to cover
- Custom EPDM rubber curb gasket for thermal breaking curb

**Hinges:** Zinc Plated Steel Pintle Hinges.

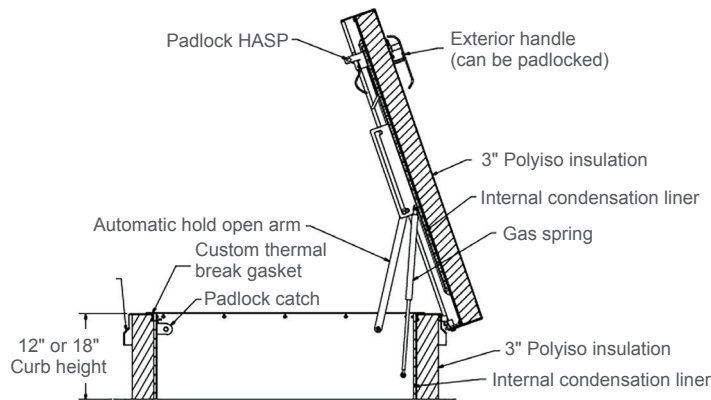
**Lift Assist:** Cover operation is assisted by enclosed heavy-duty gas spring.

**Latches:** Slam latch with interior and exterior handles and padlock hasp.

**Hardware:** All hardware is zinc plated.

**Load Capacity:** 70 psf

**Thermal Resistance:** Internal thermal breaking components and Patent Pending thermal impedance components, along with R-24 in insulation allows for extreme temperature change resistance.



Size	Aluminum Cover and Curb		
	Model No.	12" Curb Part No.	18" Curb Part No.
3' 0" x 2' 6"	TP-1	3501-241-9	3501-241-18
3' 0" x 3' 0"	TP-3X3	3501-242-9	3501-242-18
4' 0" x 4' 0"	TP-4X4	3501-243-9	3501-243-18
2' 6" x 4' 6"	TP-2	3501-244-9	3501-244-18

# ROOF ACCESS HATCHES

## EQUIPMENT ACCESS – DOUBLE LEAF

### SPECIFICATIONS

#### Material:

- RB: 14 gauge galvanized steel cover and Curb
- RC: .090 Aluminum Cover and 14 gauge galvanized steel Curb
- RD: .090 Aluminum Cover and Curb

#### Finish:

- Galvanized Steel: White Powder Coat
- Aluminum: Mill Finish

#### Cover:

- RB: 14 gauge galvanized steel exterior with 22 gauge galvanized steel liner with 1" fiberglass insulation
- RC & RD: Mill finish .090 aluminum exterior with .063 aluminum liner with 1" fiberglass insulation

#### Curb:

- RB & RC: 14 gauge galvanized steel with a 12" high curb, integral counterflashing, 3½" wide mounting flanges with pre-drilled holes and 1" exterior fiberboard insulation
- RD: Mill finish .090 aluminum with a 12" high curb, integral counterflashing, 3½" wide mounting flanges with pre-drilled holes and 1" exterior fiberboard insulation

**Gasket:** Extruded EPDM rubber gasket adhered to cover

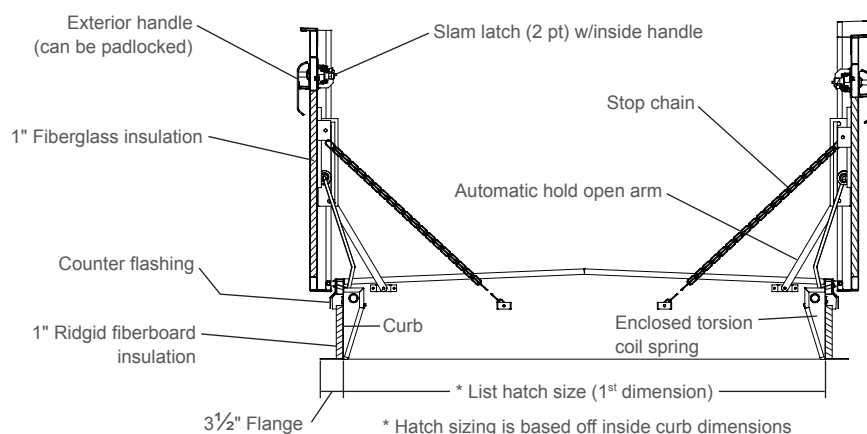
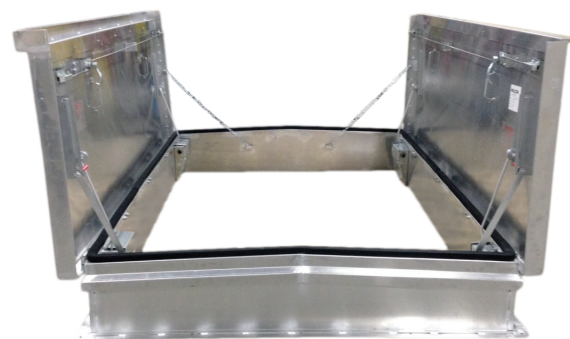
**Hinges:** Steel Pintle Hinge

**Lift Assist:** Cover operation is assisted by enclosed heavy-duty Torsion Coil Spring

**Latches:** Two-point slam latch system for tight, secure closure with exterior handles and padlock hasps

**Hardware:** All hardware is zinc plated (stainless steel hardware optional)

**Load Capacity:** 40 psf



Size	Galvanized Steel Cover and Curb		Aluminum Cover, Galvanized Curb		Aluminum Cover and Curb	
	Model No.	Lbs.	Model No.	Lbs.	Model No.	Lbs.
5'0" x 5'0"	RB-5X5		RC-5X5		RD-5X5	
5'0" x 10'0"	RB-5X10		RC-5X10		RD-5X10	
5'0" x 11'0"	RB-4	1831	RC-4	1220	RD-4	1055
6'0" x 6'0"	RB-6X6		RC-6X6	1220	RD-6X6	
6'0" x 11'0"	RB-5	2060	RC-5	1332	RD-5	1166
8'0" x 8'0"			RC-6	1220	RD-6	1055

# ROOF ACCESS HATCHES

## RETROFIT SAFETY RAIL SYSTEMS

### SAF-T-RAIL

#### SPECIFICATIONS

##### Benefits:

- Easily installs in minutes with non-penetrating attachments using standard tools
- Telescoping Rails that fit hatches from most manufacturers
- Installs on existing hatches with cap flashings from ANY manufacturer
- Durable/Sturdy Metal Fabrication
- Durable safety yellow powder coat to withstand the elements
- Structural aluminum square tubing
- 5 year warranty

##### OSHA Compliant:

- Meets OSHA fall protection standards 29 CFR 1910.23 and 1926.502 guarding for opening requirements and supports 200 lbs force
- Posts, top rail, mid-rails & gate made of structural aluminum square tubing
- Powder coated safety yellow rails
- Patent #US10501942B2

##### Notes:

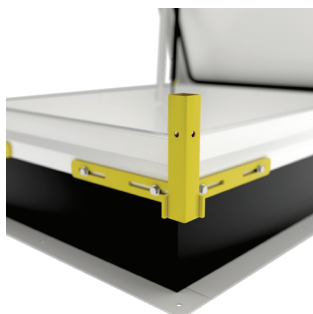
1. Displayed dimension are outside dimensions of hatch curb cap (nominal)



**MSTR-75-110**  
For Service Stair  
30.5" x 75.25" to 52" x 110"  
(nominal)



**MSTR-30-52**  
For Ladder Access  
33" x 30.5" to 58" x 52"  
(nominal)



Corner Brackets



Easy to install hinges



**MSTR-48-70**  
For Ship Stair  
30.5" x 48" to 52" x 70"  
(nominal)



# ROOF ACCESS HATCHES

## UPRIGHT SAFETY BAR

### SAFETY ACCESSORIES

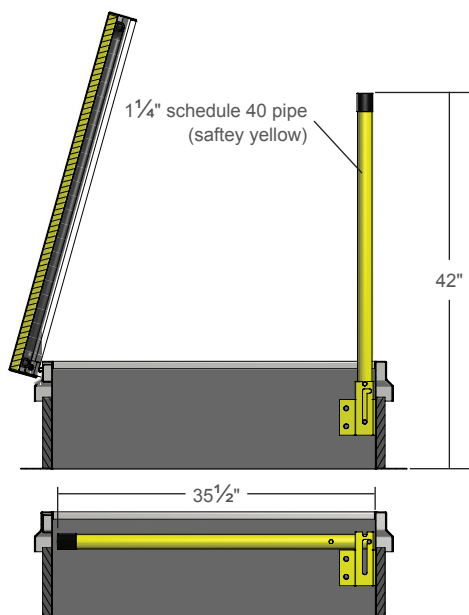
#### SPECIFICATIONS

**Benefits:**

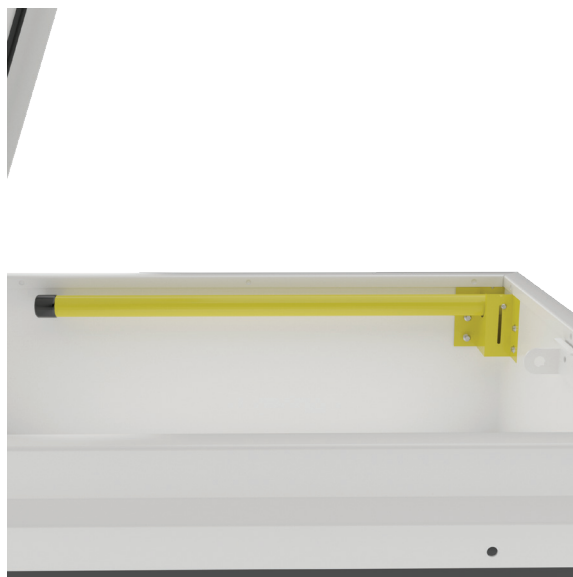
- The Milcor Upright Safety Bar is designed to assist in safe passage when exiting and entering the roof hatch. A heavy-duty, hinged steel mechanism allows the upward and downward movement of the bright yellow safety bar.
- No need to attach bar to center of ladder rungs. Milcor's Upright Safety Bar is designed to provide the safest way to exit and enter a roof hatch without restricting the opening or footing on the top rungs of the ladder.

**Quality Design and Construction:**

- Simple and safe lift-and-lock into place movement.
- Side location for safer and more convenient passage.
- Automatically locks when fully extended.
- Shipped as a separate unit. Also available assembled to roof hatch.
- Designed for hatches 4-foot and smaller on the ladder side.
- Designed to provide approximately 42" height above ladder.



Upright Safety Bar





# ROOF ACCESS HATCHES

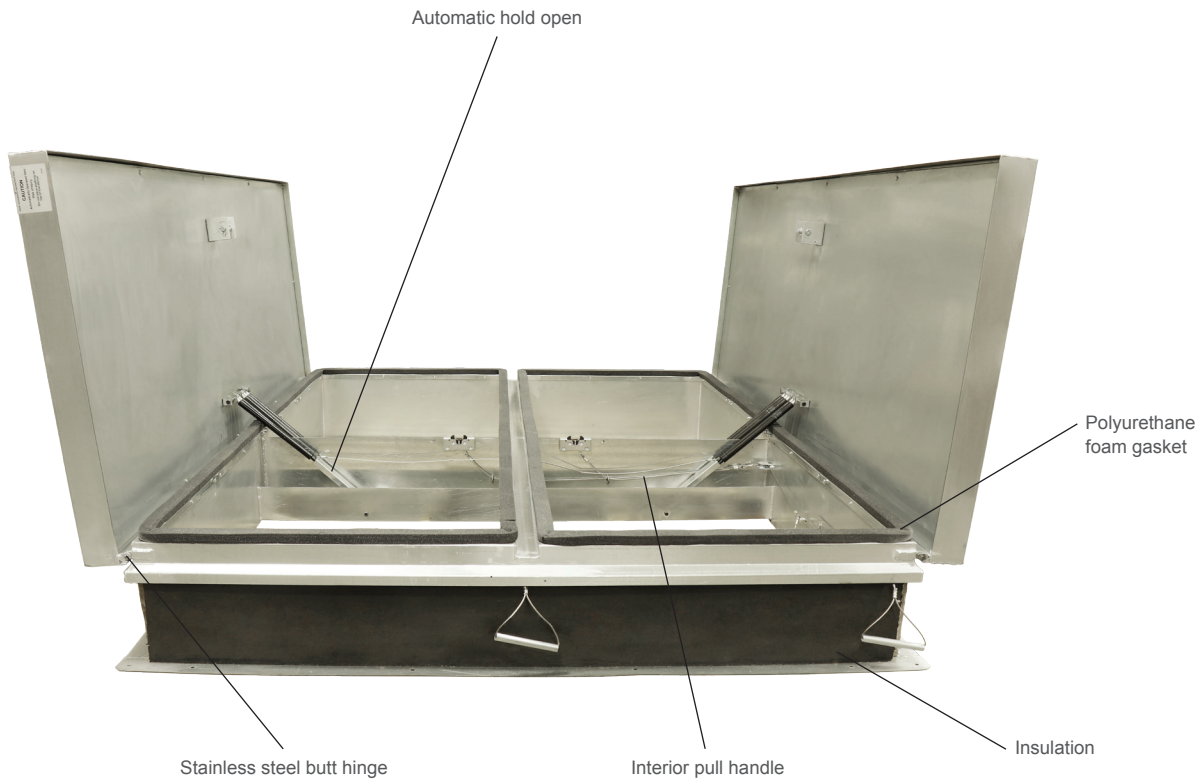
## OPTIONS

### **Hatch Options**

- Custom Sizes
- Metal Roofs
- Stainless Steel Hardware
- Custom cover and curb insulation types and thicknesses
- Motorized (single leaf only)
- Pitched
- Curb Heights
- Curb Liner
- Curb Mounted

# HEAT & SMOKE VENTS

## PRODUCT FEATURE



### Features & Benefits

- Designed to open automatically to 80 degrees in the event of a fire
- Releases smoke decreasing the possibility of deadly smoke inhalation to building occupants
- Permits firefighters to douse flames directly from rooftop
- Comes in a number of UL Listed sizes and styles
- Fully insulated cover and curb
- Interior and exterior pull release handles for manual opening
- Equipped with dampened gas spring to prevent over travel

# HEAT & SMOKE VENTS

## BIG SMOKY

### SPECIFICATIONS

#### Material:

- U-LP: 14 gauge galvanized steel cover and 14 gauge galvanized steel curb with a 12 gauge galvanized steel curb cap
- U-LPA: .10 Aluminum cover and .10 Aluminum curb with .125 Aluminum Curb Cap
- U-LPAG: .10 Aluminum Cover and 14 gauge galvanized steel curb with 12 gauge galvanized steel curb cap

#### Finish:

- Galvanized Steel: Mill Finish
- Aluminum: Mill Finish

**Cover:** High-strength composite construction with exterior cover and liner bonded to a 2" core of rigid foam-type insulation

**Curb:** 12½" in height with 3½" pre-drilled mounting flanges and counterflashing with 1" thick exterior fiberboard insulation

**Gasket:** Polyurethane Foam Gasket adhered to the entire perimeter of curb

**Hinges:** Stainless Steel Butt Hinge

**Springs:** Dampened Gas Springs to open against a 10 psf snow or wind load at a safe controlled speed

**Latches:** Latch designed to open automatically with parting of single 165 degree fusible link or manually with interior and exterior pull release handles without disturbing the fusible link. Designed to withstand 90 psf wind uplift for class 90 roof decks

**Hardware:** All hardware is zinc plated (stainless steel hardware optional)

**Load Capacity:** 50psf

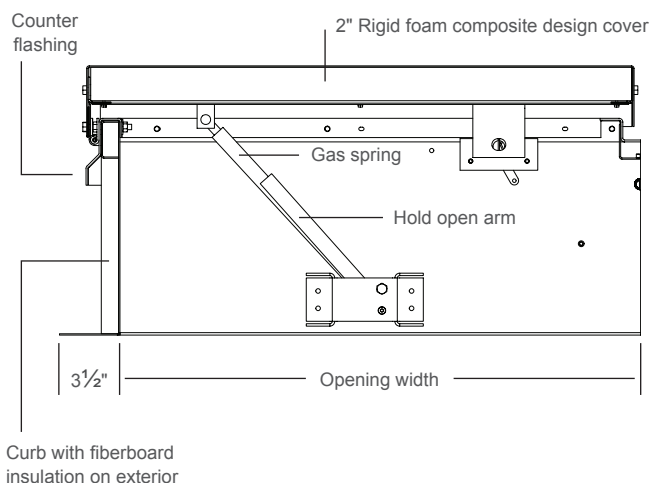
**Operation:** Covers automatically spring open to approximately 80 degrees in the event of fire, being actuated by the parting of a single UL-listed 165 degree F fusible link, automatically locking in the fully opened position



Size	Galvanized Steel		Aluminum		Aluminum Cover & Galvanized Curb	
	Model No.	Lbs.	Model No.	Lbs.	Model No.	Lbs.
4'0" x 4'0"	U-LP-4848	260	U-LPA-4848	190	U-LPAG-4848	250
4'0" x 5'0"	U-LP-4860	310	U-LPA-4860	225	U-LPAG-4860	312
4'0" x 6'0"	U-LP-4872	360	U-LPA-4872	265	U-LPAG-4872	337
4'0" x 7'0"	U-LP-4884	410	U-LPA-4884	310	U-LPAG-4884	385
4'0" x 7'6"	U-LP-4890	435	U-LPA-4890	320	U-LPAG-4890	407
4'0" x 8'0"	U-LP-4896	460	U-LPA-4896	345	U-LPAG-4896	430
4'6" x 4'0"	U-LP-5448	285	U-LPA-5448	210		
4'6" x 5'0"	U-LP-5460	345	U-LPA-5460	255		
4'6" x 6'0"	U-LP-5472	405	U-LPA-5472	305		
5'0" x 5'0"	U-LP-6060	370	U-LPA-6060	270	U-LPAG-6060	368
5'0" x 6'0"	U-LP-6072	421	U-LPA-6072	315	U-LPAG-6072	414
5'0" x 7'0"	U-LP-6084	491	U-LPA-6084	370	U-LPAG-6084	483
5'0" x 8'0"	U-LP-6096	551	U-LPA-6096	415	U-LPAG-6096	530
5'0" x 9'0"	U-LP-60108	611	U-LPA-60108	460	U-LPAG-60108	596
5'6" x 6'0"	U-LP-6672	461	U-LPA-6672	345	U-LPAG-6672	455
5'6" x 7'0"	U-LP-6684	531	U-LPA-6684	400	U-LPAG-6684	531
5'6" x 8'0"	U-LP-6696	605	U-LPA-6696	455	U-LPAG-6696	583
5'6" x 9'0"	U-LP-66108	695	U-LPA-66108	520	U-LPAG-66108	655
6'0" x 6'0"	U-LP-7272	502	U-LPA-7272	375	U-LPAG-7272	496
6'0" x 7'0"	U-LP-7284	586	U-LPA-7284	440	U-LPAG-7284	579
6'0" x 8'0"	U-LP-7296	686	U-LPA-7296	515	U-LPAG-7296	636
6'0" x 9'0"	U-LP-72108	756	U-LPA-72108	570	U-LPAG-72108	715

#### Certifications:

- UL 793 Listed
- UL 790 Certified



# HEAT & SMOKE VENTS

## STC-50 ACOUSTICAL

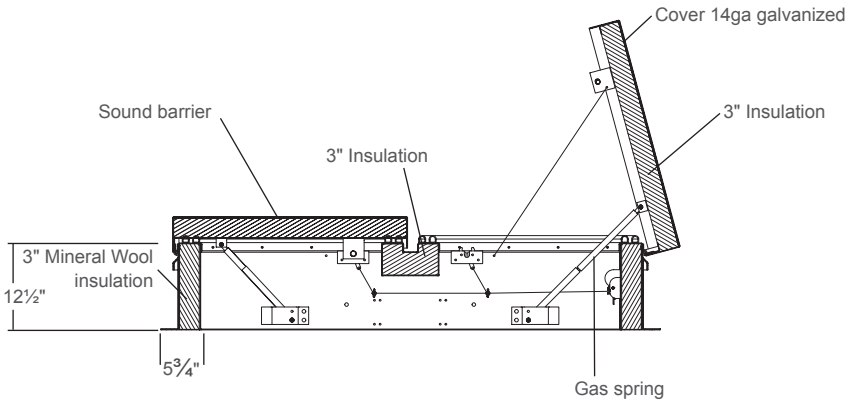
### SPECIFICATIONS

- Material:** 14 gauge galvanized steel covers and curb with 12 gauge galvanized steel counterflashing
- Finish:** Curb and interior cover powder coated black and exterior cover powder coated white
- Cover:** Covers insulated with mineral wool 3" in thickness and lined with acoustical barrier and protected by cover liner
- Curb:** 12½" in height, 5¾" pre-drilled mounting flanges and a counterflashing. Curb and gutter are insulated with mineral wool 3" in thickness and lined with acoustical barrier to provide excellent sound deadening
- Gasket:** Two layers of D-profile EPDM gasket are adhered to the entire perimeter of curb
- Hinges:** Stainless steel butt hinges
- Springs:** Dampened Gas Springs to open against a 10 psf snow or wind load at a safe and controlled speed

Size	STC-50	
	Model No.	Lbs.
4'0" x 4'0"	U-LP STC-50 4848	979
4'0" x 5'0"	U-LP STC-50 4860	1112
4'0" x 6'0"	U-LP STC-50 4872	1244
4'0" x 7'0"	U-LP STC-50 4884	1377
4'0" x 8'0"	U-LP STC-50 4896	1509
5'0" x 6'0"	U-LP STC-50 6072	1394
5'0" x 7'0"	U-LP STC-50 6084	1535
5'0" x 8'0"	U-LP STC-50 6096	1675
5'6" x 6'0"	U-LP STC-50 6672	1468
5'6" x 7'0"	U-LP STC-50 6684	1613
5'6" x 8'0"	U-LP STC-50 6696	1759
6'0" x 6'0"	U-LP STC-50 7272	1543
6'0" x 7'0"	U-LP STC-50 7284	1692
6'0" x 8'0"	U-LP STC-50 7296	1842



- Latches:** Rotary latch designed to withstand 90 psf wind uplift for Class 90 roof decks. Latch is cable routed to automatically open by parting of single 165 degree fusible link or manually with interior exterior pull release handles without disturbing the fusible link
- Hardware:** All hardware is zinc plated, stainless steel, or powder coated to prevent corrosion
- Load Capacity:** 50psf
- Operation:** Covers automatically spring open to approximately 80 degrees in the event of fire, being actuated by the parting of a single UL-listed fusible link, or manually opened by actuating interior or exterior release. Once covers are fully opened, gas springs will lock to prevent the covers from prematurely closing. The locks can be opened with an external cable routing to allow the covers to be closed
- Certifications:**
  - Materials rated for STC-50, OITC 39
  - UL listed



# HEAT & SMOKE VENTS

## UL-SKY FLAT PANEL SKYLIGHT

### SPECIFICATIONS

**Material:**

- UL-SKY: 16 gauge galvanized steel
- UL-SKYA: .090 aluminum

**Finish:**

- Galvanized Steel: Mill Finish
- Aluminum: Mill Finish

**Cover:** Damage resistance, light admitting, polycarbonate panels surrounded by an extruded aluminum frame.

**Curb:** 13½" in height with 3½" pre-drilled mounting flanges and counterflashing with 1" thick exterior fiberboard insulation

**Gasket:** Polyurethane Foam Gasket adhered to the entire perimeter of curb

**Hinges:** Steel Pintle Hinge

**Springs:** Torsion Coil Springs

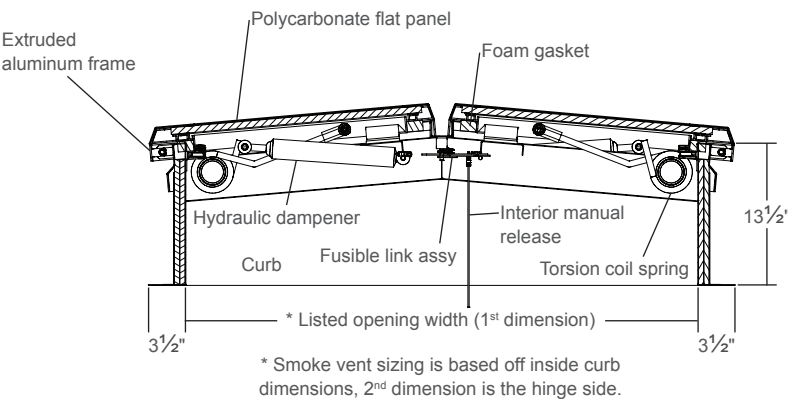
**Dampeners:** Hydraulic dampeners to control cover opening speed and prevent over travel

**Latches:** Latch designed to open automatically with parting of single 165 degree fusible link or manually with interior and exterior pull release handles without disturbing the fusible link.

**Hardware:** All hardware is zinc plated (stainless steel hardware optional)

**Operation:** Covers automatically spring open to approximately 90 degrees in the event of fire, being actuated by the parting of a single UL-listed 165 degree F fusible link, automatically locking in the fully opened position

**Certifications:** None



Size	Galvanized Steel Curb		Aluminum	
	Model No.	Lbs.	Model No.	Lbs.
4'0" x 4'0"	UL-SKY-4848	284	UL-SKYA-4848	202
4'0" x 5'0"	UL-SKY-4860	337	UL-SKYA-4860	240
4'0" x 6'0"	UL-SKY-4872	390	UL-SKYA-4872	278
4'0" x 7'0"	UL-SKY-4884	443	UL-SKYA-4884	316
4'0" x 8'0"	UL-SKY-4896	496	UL-SKYA-4896	354
4'6" x 4'0"	UL-SKY-5448	311	UL-SKYA-5448	221
4'6" x 5'0"	UL-SKY-5460	364	UL-SKYA-5460	259
4'6" x 6'0"	UL-SKY-5472	417	UL-SKYA-5472	297
4'6" x 7'0"	UL-SKY-5484	470	UL-SKYA-5484	335
4'6" x 8'0"	UL-SKY-5496	523	UL-SKYA-5496	373
5'0" x 4'0"	UL-SKY-6048	337	UL-SKYA-6048	240
5'0" x 5'0"	UL-SKY-6060	390	UL-SKYA-6060	278
5'0" x 6'0"	UL-SKY-6072	443	UL-SKYA-6072	316
5'0" x 7'0"	UL-SKY-6084	496	UL-SKYA-6084	354
5'0" x 8'0"	UL-SKY-6096	549	UL-SKYA-6096	391
5'6" x 4'0"	UL-SKY-6648	364	UL-SKYA-6648	259
5'6" x 5'0"	UL-SKY-6660	417	UL-SKYA-6660	297
5'6" x 6'0"	UL-SKY-6672	470	UL-SKYA-6672	335
5'6" x 7'0"	UL-SKY-6684	523	UL-SKYA-6684	373
5'6" x 8'0"	UL-SKY-6696	576	UL-SKYA-6696	410
6'0" x 4'0"	UL-SKY-7248	390	UL-SKYA-7248	278
6'0" x 5'0"	UL-SKY-7260	443	UL-SKYA-7260	316
6'0" x 6'0"	UL-SKY-7272	496	UL-SKYA-7272	354
6'0" x 7'0"	UL-SKY-7284	549	UL-SKYA-7284	391
6'0" x 8'0"	UL-SKY-7296	602	UL-SKYA-7296	429

# HEAT & SMOKE VENTS

## UL-SEE DOMED SKYLIGHT

### SPECIFICATIONS

#### Material:

- UL-SEE: 16 gauge galvanized steel
- UL-SEEA: .090 aluminum

#### Finish:

- Galvanized Steel: Mill Finish
- Aluminum: Mill Finish

**Cover:** Damage resistance, light admitting, 1/8" polycarbonate outer dome with 1/8" polycarbonate inner dome, surrounded by an extruded aluminum frame.

**Curb:** 13 1/2" in height with 3 1/2" pre-drilled mounting flanges and counterflashing with 1" thick exterior fiberboard insulation

**Gasket:** Polyurethane Foam Gasket adhered to the entire perimeter of curb

**Hinges:** Steel Pintle Hinge

**Springs:** Torsion Coil Spring operators to open against a 10 psf snow or wind load

**Dampeners:** Hydraulic dampeners to control cover opening speed and prevent over travel

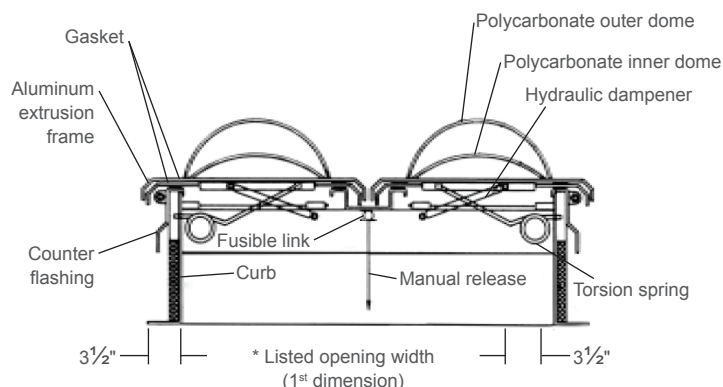
**Latches:** Latch designed to open automatically with parting of single 165 degree fusible link or manually with interior and exterior pull release handles without disturbing the fusible link. Designed to hold covers closed when subjected to 30 psf uplift pressure

**Hardware:** All hardware is zinc plated (stainless steel hardware optional)

**Operation:** Covers automatically spring open to approximately 90 degrees in the event of fire, being actuated by the parting of a single UL-listed 165 degree F fusible link, automatically locking in the fully opened position

#### Certifications:

- UL 793 Listed
- UL 790 Certified



Size	Galvanized Steel Curb		Aluminum	
	Model No.	Lbs.	Model No.	Lbs.
4'0" x 4'0"	UL-SEE-4848	240	UL-SEEA-4848	240
4'0" x 5'0"	UL-SEE-4860	285	UL-SEEA-4860	285
4'0" x 6'0"	UL-SEE-4872	330	UL-SEEA-4872	330
4'0" x 7'0"	UL-SEE-4884	370	UL-SEEA-4884	370
4'0" x 8'0"	UL-SEE-4896	420	UL-SEEA-4896	420
4'6" x 4'0"	UL-SEE-5448	265	UL-SEEA-5448	265
4'6" x 5'0"	UL-SEE-5460	320	UL-SEEA-5460	320
4'6" x 6'0"	UL-SEE-5472	355	UL-SEEA-5472	355
4'6" x 7'0"	UL-SEE-5484	430	UL-SEEA-5484	430
4'6" x 8'0"	UL-SEE-5496	480	UL-SEEA-5496	480
5'0" x 4'0"	UL-SEE-6048	300	UL-SEEA-6048	300
5'0" x 5'0"	UL-SEE-6060	355	UL-SEEA-6060	355
5'0" x 6'0"	UL-SEE-6072	400	UL-SEEA-6072	400
5'0" x 7'0"	UL-SEE-6084	455	UL-SEEA-6084	455
5'0" x 8'0"	UL-SEE-6096	520	UL-SEEA-6096	520
5'6" x 4'0"	UL-SEE-6648	335	UL-SEEA-6648	335
5'6" x 5'0"	UL-SEE-6660	390	UL-SEEA-6660	390
5'6" x 6'0"	UL-SEE-6672	440	UL-SEEA-6672	440
5'6" x 7'0"	UL-SEE-6684	500	UL-SEEA-6684	500
5'6" x 8'0"	UL-SEE-6696	565	UL-SEEA-6696	565
6'0" x 4'0"	UL-SEE-7248	370	UL-SEEA-7248	370
6'0" x 5'0"	UL-SEE-7260	425	UL-SEEA-7260	425
6'0" x 6'0"	UL-SEE-7272	475	UL-SEEA-7272	475
6'0" x 7'0"	UL-SEE-7284	545	UL-SEEA-7284	545
6'0" x 8'0"	UL-SEE-7296	630	UL-SEEA-7296	630



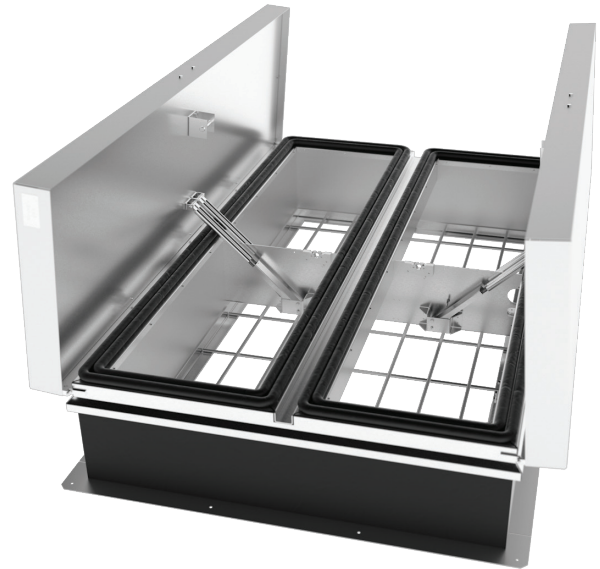
# HEAT & SMOKE VENTS

## OPTIONS

### Smoke Vent Options

- Custom Sizes
- Burglar Bars
- Metal Roofs
- Stainless Steel Hardware
- Pitched
- Curb Heights
- Curb Liner
- Curb Mounted
- Opening/Closing Options
  - Fusible Link
  - McCabe Link
  - Manual Winch
  - Explosion Vent

\* Some options void ratings

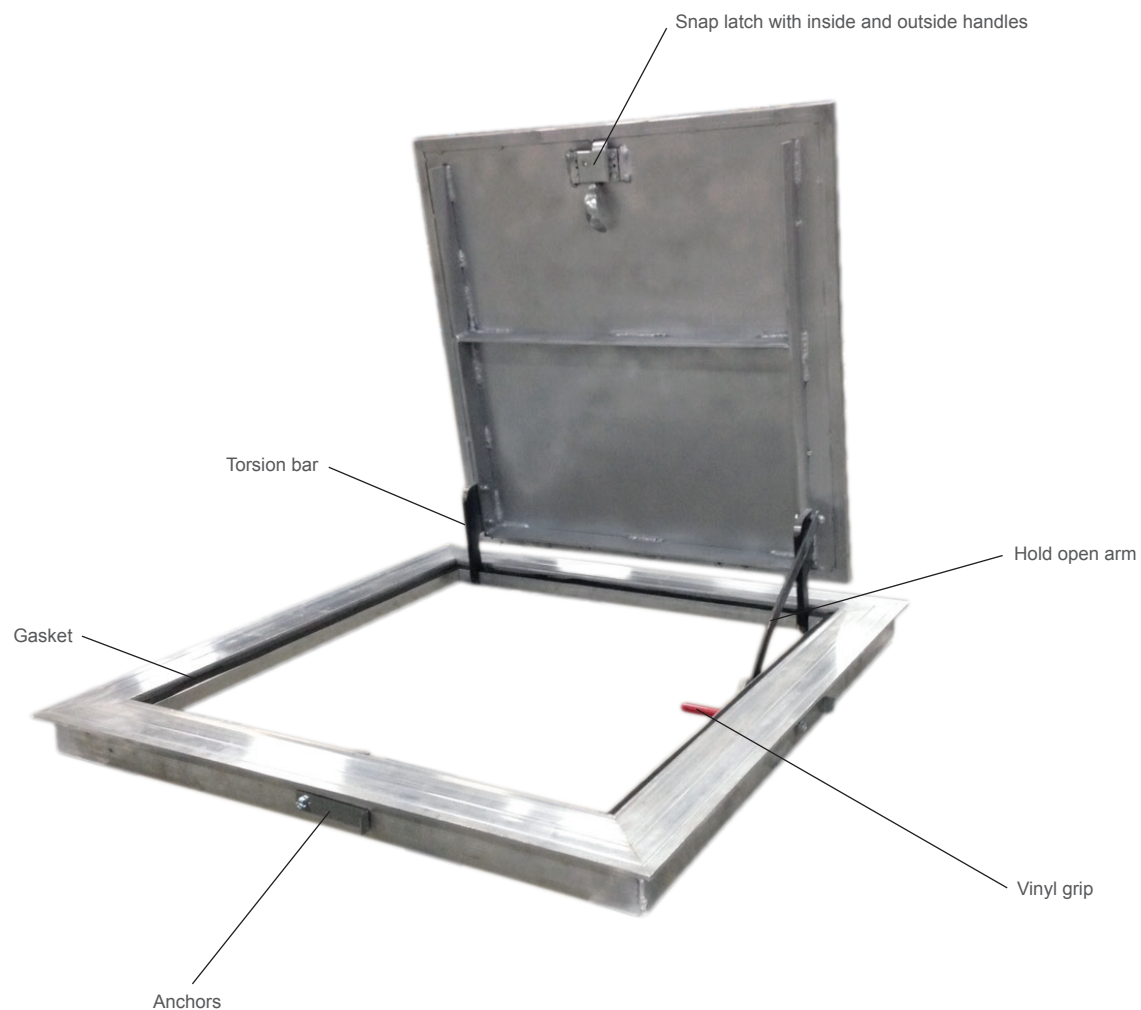


### Burglar Bars:

- 6" x 12" Grid Spacing as standard
- Available Bars: 1/2", 5/8", 3/4" & 1" Diameter

# FLOOR & SIDEWALK DOORS

## PRODUCT FEATURE



### Features & Benefits

- Heavy-Duty Construction to meet required loads
- Both Secure and Non-Secure Options Available

# FLOOR & SIDEWALK DOORS

## NON-SECURITY ALUMINUM FLOOR DOORS - STYLES F, T & Z

### SPECIFICATIONS

**Material:**

- F: 1/4" Aluminum tread plate and extruded aluminum frame
- T: 1/8" Aluminum plate and extruded aluminum frame
- Z: 1/8" Aluminum recessed plate and formed aluminum frame

**Finish:**

- o Mill Finish

**Cover:**

- F: Diamond patterned safety tread plate designed to support minimum of 200 psf live load
- T: 1/8" Recessed smooth plate for floor tile to support minimum of 200 psf live load
- Z: Recessed smooth plate for terrazzo to support minimum of 200 psf live load

**Frame:**

- F & T: 1/8" Extruded aluminum frame w/ integral masonry anchors
- Z: 1/8" fully welded and mitered aluminum frame with welded masonry anchors

**Gasket:** 1/16" Neoprene gasket adhered to frame ledge

**Handle:** Lift Ring for easy access

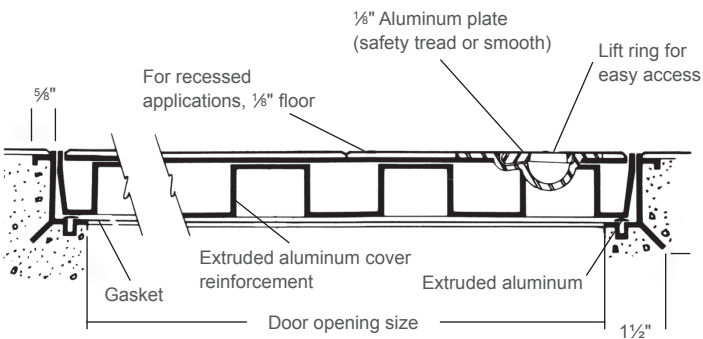
**Hardware:** Stainless steel



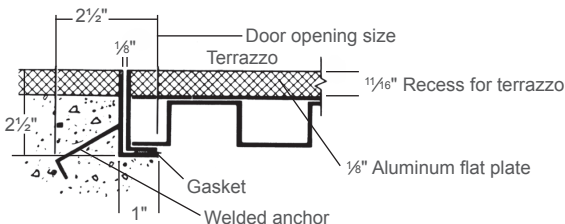
Diamond pattern



Flush Door Style (T Series)



Terrazzo Detail (Z Series)



Size	Flush Cover		Tile Cover		Terrazzo Cover	
	Model No.	Lbs.	Model No.	Lbs.	Model No.	Lbs.
2'0" x 2'0"	F-62	30	T-62	30	Z-62	40
2'6" x 2'6"	F-64	35	T-64	35	Z-64	45
3'0" x 2'6"	F-66	40	T-66	40	Z-66	50
3'0" x 3'0"	F-68	45	T-68	45	Z-68	55

# FLOOR & SIDEWALK DOORS

## SECURITY ALUMINUM FLOOR DOORS - STYLES F, T

### SPECIFICATIONS

**Material:**

- F: ¼" Aluminum Tread Plate and extruded aluminum frame
- T: ¼" Aluminum Plate and extruded aluminum frame

**Finish:** Mill Finish

**Cover:**

- F: Diamond patterned safety tread plate designed to support 150 psf live load.
- T: ¼" Recessed smooth cover with extruded tile stop for floor tile to support 150 psf live load

**Frame:** F & T: ¼" Extruded aluminum frame with strap-type anchors bolted onto frame

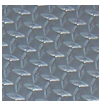
**Gasket:** ¼" Neoprene gasket adhered to frame

**Latch:** Snap Latch

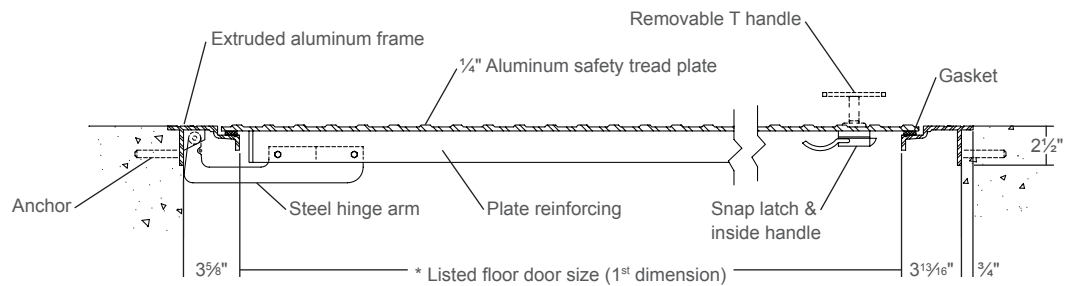
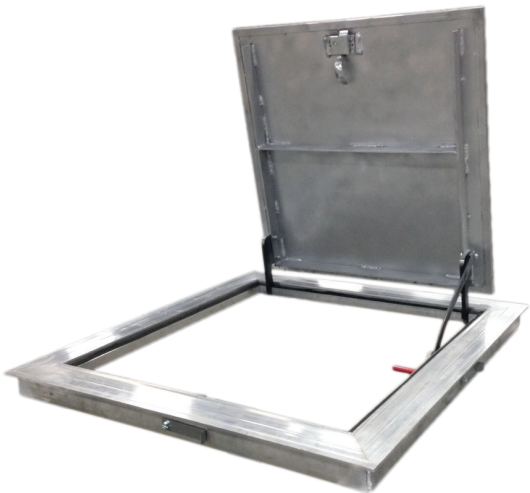
**Handle:** Inside handle and removable outside T handle

**Lift Assistance:** Torsion Bar

**Hardware:** Zinc plated (stainless steel optional)



Diamond pattern



No. of Leafs	Size	Flush Cover		Tile Cover	
		Model No.	Lbs.	Model No.	Lbs.
Single-Leaf	2'0" x 2'0"	F-2424	60	T-2424	66
	2'6" x 2'6"	F-3030	75	T-3030	85
	3'0" x 2'6"	F-3630	85	T-3630	95
	3'0" x 3'0"	F-3636	95	T-3636	106
Double-Leaf	4'0" x 4'0"	F-4848	160	T-4848	180
	4'0" x 6'0"	F-4872	220	T-4872	246
	5'0" x 5'0"	F-6060	230	T-6060	258

# FLOOR & SIDEWALK DOORS

## STEEL AND ALUMINUM - STYLES GA AND GD

### SIDEWALK DOORS

#### SPECIFICATIONS

##### Material:

- GA: ¼" Steel Tread Plate and ¼" extruded aluminum frame
- GD: ¼" Aluminum Tread Plate and ¼" extruded aluminum frame

##### Finish:

- GA: Grey Powder Coat
- GD: Mill Finish

##### Cover:

- GA: Steel Diamond patterned safety tread plate designed to support 300 psf live load.
- GD: Aluminum Diamond patterned safety tread plate designed to support 300 psf live load.

**Frame:** GA & GD: ¼" Extruded aluminum frame with integral masonry anchor. Frame construction contains drainage gutter around perimeter with 1½" drain coupling to connect with interior drain

##### Latch:

- Single Leaf: Single Snap Latch
- Double Leaf: Two-point snap latch with throw bolt on inactive leaf

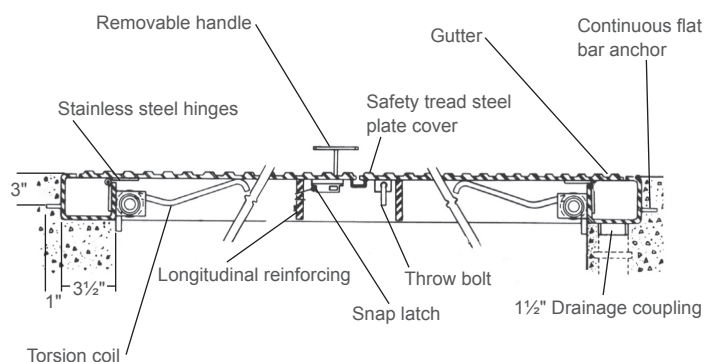
**Handle:** Inside handle and removable outside T handle

**Lift Assistance:** Torsion Coil

**Hardware:** Stainless steel



Double Leaf Style



For highly corrosive environments, zinc flame-sprayed and painted option is available for unit.

No. of Leafs	Size	Prime Painted Steel		Aluminum	
		Model No.	Lbs.	Model No.	Lbs.
Single-Leaf	2'0" x 2'0"	GA-1	170	GD-1*	75
	2'6" x 2'6"	GA-2	220	GD-2*	96
	3'0" x 2'6"	GA-3	257	GD-3	102
	3'0" x 3'0"	GA-4	286	GD-4	113
Double-Leaf	3'6" x 3'6"	GA-5	321	GD-5	134
	2'10" x 3'4"	GA-6	278	GD-6*	129
	3'4" x 3'10"	GA-7	348	GD-7*	150
	3'10" x 3'10"	GA-8	440	GD-8*	188
	4'0" x 4'0"	GA-9	482	GD-9*	198
	4'0" x 6'0"	GA-10	642	GD-10	268
	5'0" x 5'0"	GA-11	706	GD-11	27

\*Torsion spring not provided on aluminum sidewalk doors in the following standard and special sizes: single leaf type- 2'0" x 2'0" through 4'6", 2'6" x 2'6", double leaf type- 2'10" x 3'4" through 5'6", 3'10" x 3'10" through 4'0" x 4'0".

# FLOOR & SIDEWALK DOORS

## OPTIONS

### **Floor & Sidewalk Door Options**

- Custom Sizes
- Stainless Steel Hardware
- Zinc flame-sprayed for highly corrosive environments





BUILD FOR THE FUTURE

Customer Service and Support:

Airmate (USA).....	800.992.8368
Airmate (CAN) .....	888.735.5475
Ameriflow .....	800.252.8467
Amerivent (Retail).....	800.252.8467
Amerivent (Wholesale).....	800.423.4270
Amerivent (Support).....	800.748.0392
AMPCO (USA) .....	800.669.3269
AMPCO (CAN).....	888.735.5475
Duravent .....	800.835.4429
Hart & Cooley .....	800.433.6341
Hart & Cooley (Support) .....	800.748.0392
Heatfab (USA).....	800.772.0739
Heatfab (CAN) .....	800.848.2149
Lima.....	800.423.4270
Milcor .....	800.774.5240
Portals Plus.....	800.774.5240
RPS.....	800.624.8642
Security Chimney (USA).....	800.361.4909
Security Chimney (CAN) .....	800.667.3387
Selkirk (USA).....	800.848.2149
Selkirk (CAN) .....	888.735.5475
Selkirk (Support).....	800.748.0392

Manufacturing & Distribution Centers:

CANADA	
Nobel, ON	Manufacturing
Laval, QC	Manufacturing
Prescott, ON	Distribution
USA	
Grand Rapids, MI	Center of Excellence
Dallas, TX	Distribution
Englewood, OH	Distribution
Huntsville, AL	Manufacturing & Distribution
Mira Loma, CA	Distribution
Nampa, ID	Manufacturing & Distribution
Turner Falls, MA	Manufacturing & Distribution
Vacaville, CA	Manufacturing
MEXICO	
Ojinaga, MX	Manufacturing
Mexicali, MX	Manufacturing

Corporate Headquarters:

Duravent Group  
28 W. Adams, Suite 1810  
Detroit, MI 48226  
Tel: 800.835.4429  
Email: [info@duraventgroup.com](mailto:info@duraventgroup.com)  
[www.duraventgroup.com](http://www.duraventgroup.com)



BUILD FOR THE FUTURE

[www.duraventgroup.com](http://www.duraventgroup.com)

