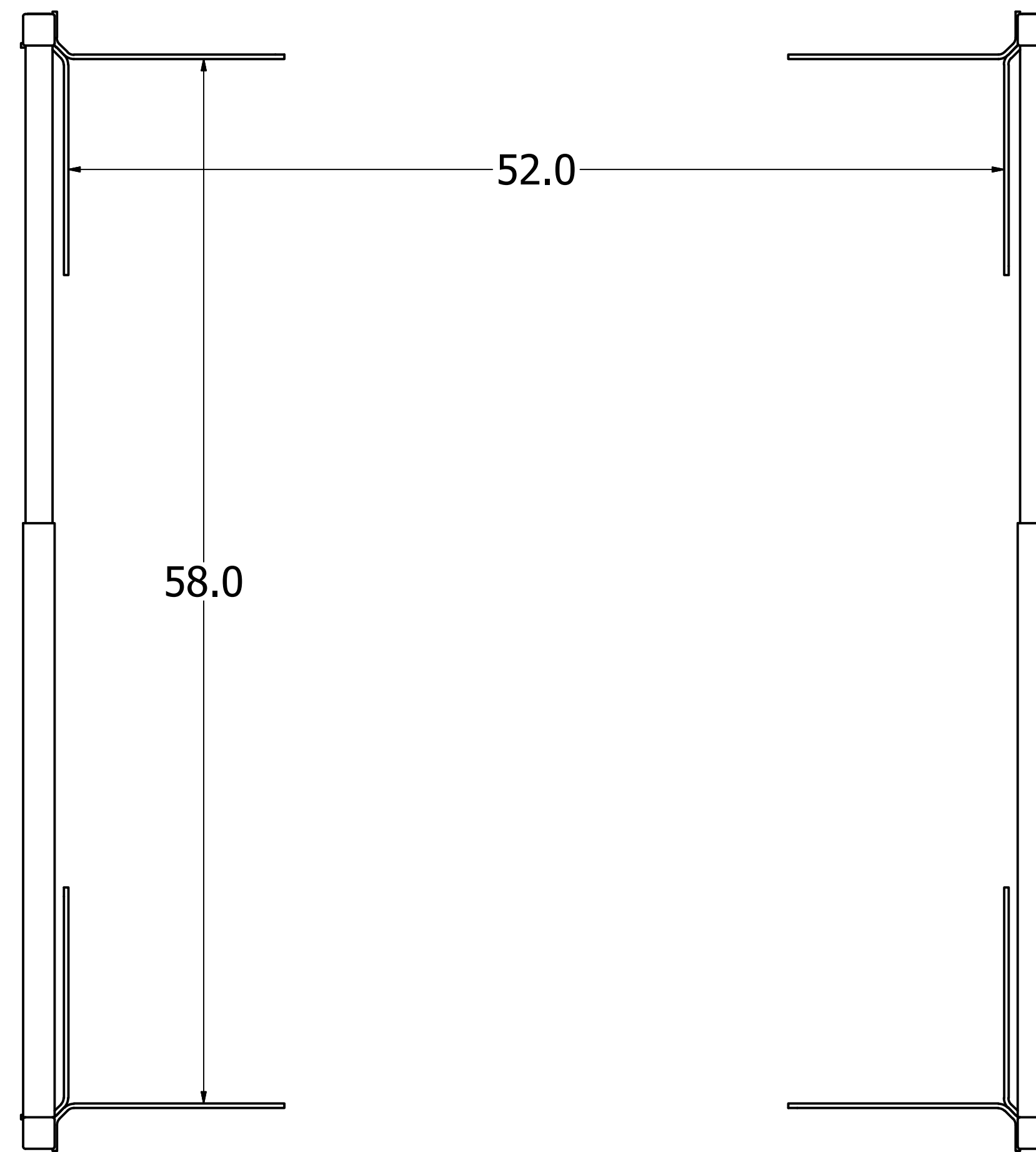
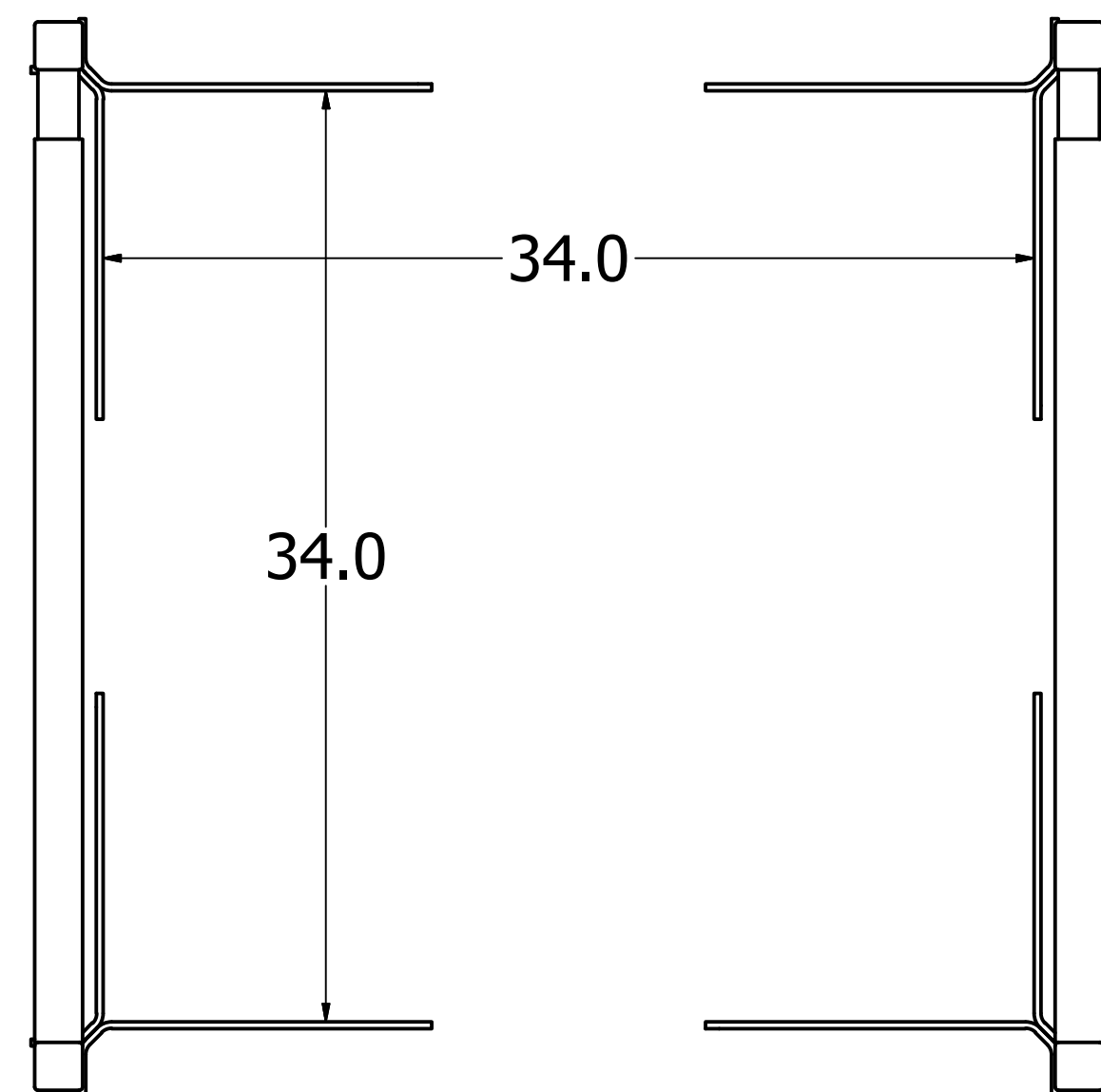


STANDARD RETROFIT SAFETY RAILING COMPATIBILITY:

(NOMINAL HATCH WIDTH X LENGTH)
 2'6"X2'6" - MINIMUM
 4'0"X4'6" - MAXIMUM
 SPECIALS FOR NOMIAL HATCHES LARGER THAN 4'0"X4'6"
 RAIL HEIGHT MEETS 42" REQUIREMENT
 DISPLAYED DIMENSIONS ARE OUTSIDE DIMENSIONS OF CURB, NOT NOMINAL.

FEATURES:

1. SELF CLOSING HINGES
2. POWDER COATED SAFETY YELLOW
3. SLOTTED CORNER BRACKET HOLES FOR UNIVERSAL COMPATABILITY AND EASE OF INSTALLATION
4. RAIL AND GATE TELESCOPE TO ACCOMODATE MULTIPLE HATCH SIZES.



ORDER WILL NOT BE RELEASED FOR FABRICATION UNTIL SIGNED COPY IS RECEIVED.

VERIFICATION AND APPROVAL OF GENERAL ARRANGEMENT AND OVERALL DIMENSIONS FOR THIS DOCUMENT ARE REQUIRED BEFORE THE ORDER IS ENTERED FOR MANUFACTURING.

APPROVAL SIGNATURE _____

TITLE HELD _____

DATE OF APPROVAL _____

DRAWN	SRP	4/17/2015	Hart & Cooley Inc. 5030 Corporate Exchange Blvd. SE Grand Rapids, MI. 49512 Ph: 800-624-8642		
CHECKED		MILCOR	TITLE		
QA		TOLERANCE	RETROFIT SAFETY RAIL		
MFG		UNLESS SPECIFIED	SIZE	DWG NO	REV
APPROVED		.XXX ± 0.005"	D	MSTR-30-48	--
		.XX ± 0.01"	SCALE		
		FRACT. ± 1/16"			
		ANGLES ± 1'			