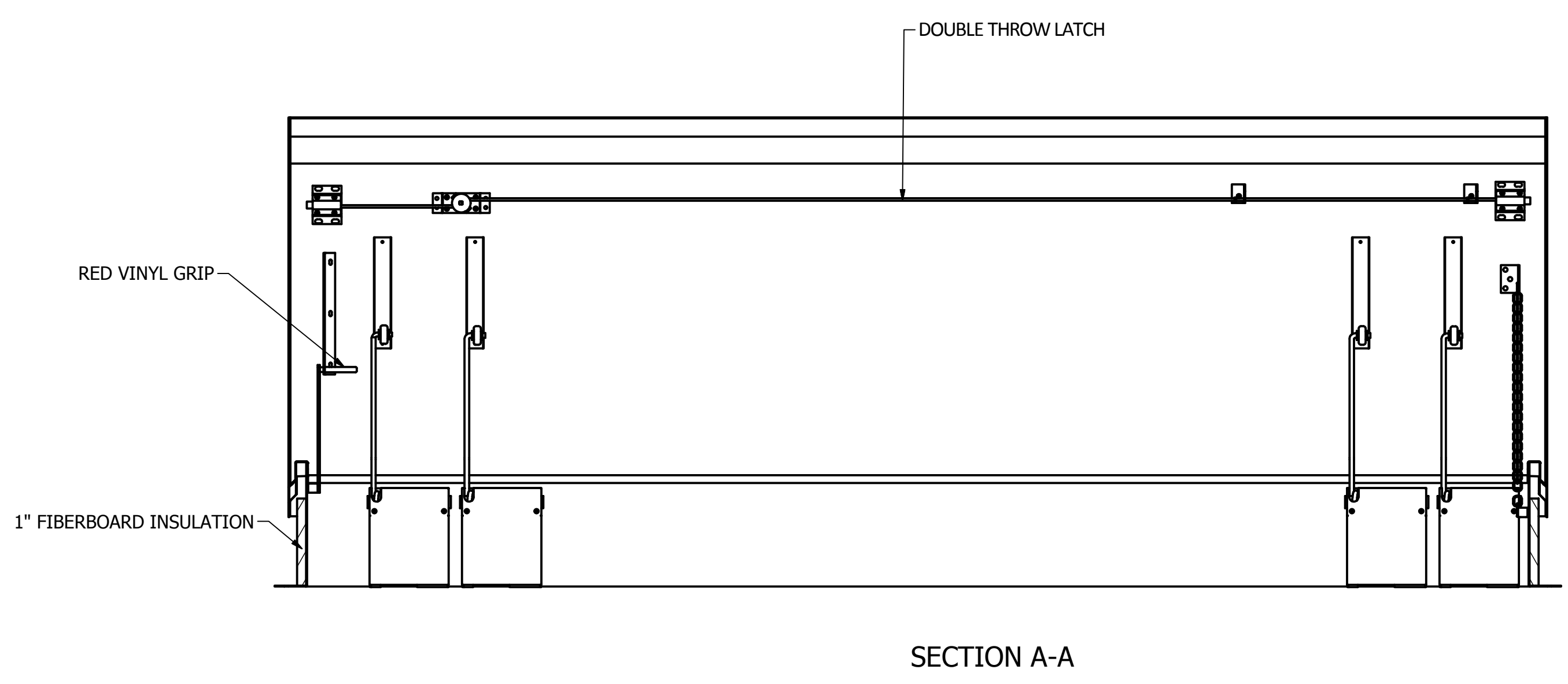
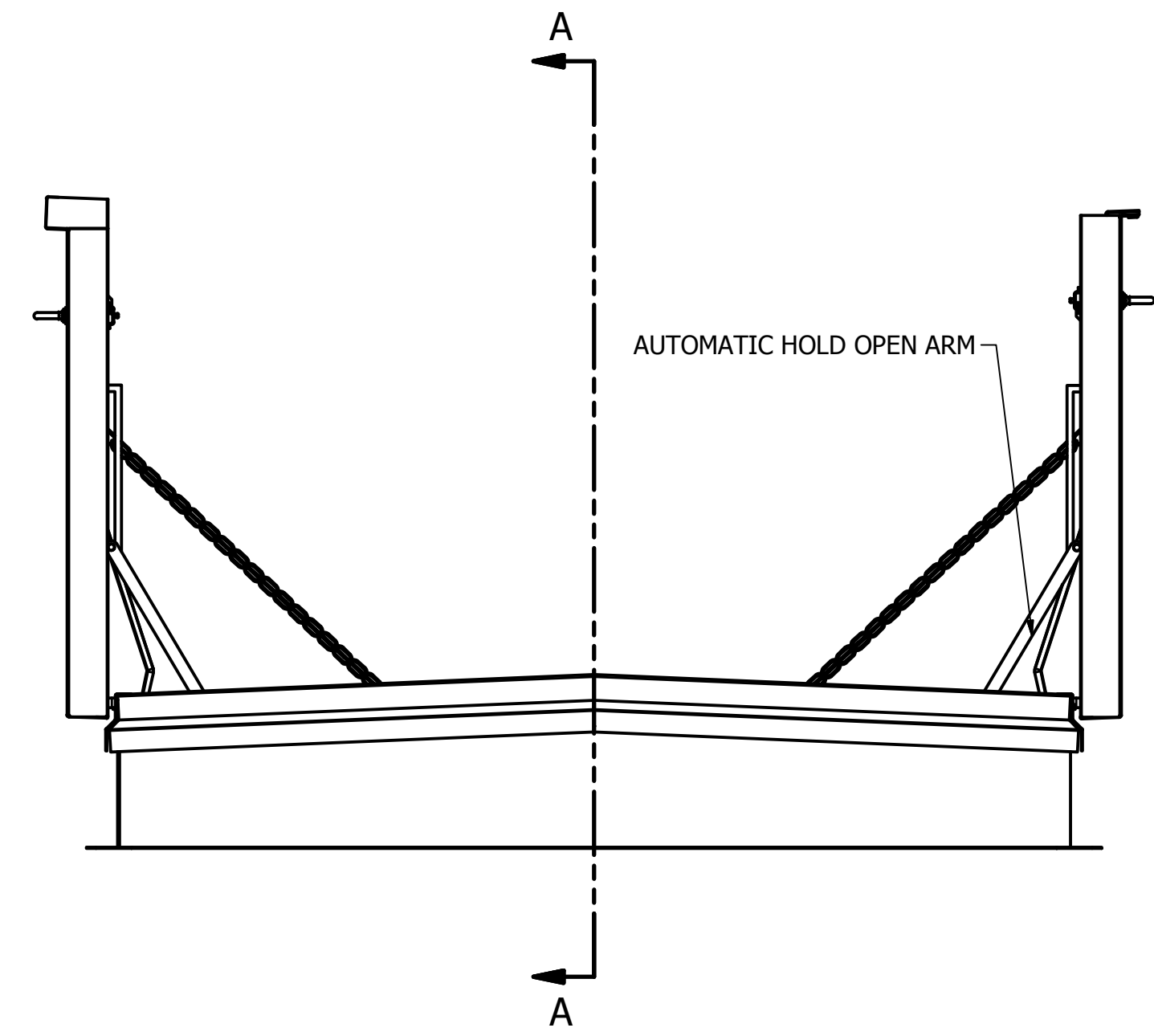


NOTES:  
 SIZE: RB-6'0"X11'0"  
 1) 40psf COVER LIVE LOAD RATING  
 2) HATCH PAINTED WHITE  
 3) MATERIALS:  
 14ga GALVANIZED, COVER  
 14ga GALVANIZED, CURB  
 14ga GALVANIZED, COUNTER FLASHING  
 22ga GALVANIZED, COVER LINER



ORDER WILL NOT BE RELEASED FOR FABRICATION UNTIL SIGNED COPY IS RECEIVED.

VERIFICATION AND APPROVAL OF GENERAL ARRANGEMENT AND OVERALL DIMENSIONS FOR THIS DOCUMENT ARE REQUIRED BEFORE THE ORDER IS ENTERED FOR MANUFACTURING.

APPROVAL SIGNATURE \_\_\_\_\_

TITLE HELD \_\_\_\_\_

DATE OF APPROVAL \_\_\_\_\_

DRAWN	CMD	2/25/2015	Hart & Cooley Inc. 815 Kimberly Drive Carol Stream, IL 60188 Ph: 800-624-8642		
CHECKED	<b>Milcor</b>		TITLE		
QA	TOLERANCE UNLESS SPECIFIED		RB-5 DOUBLE LEAF ROOF ASSEMBLY		
MFG	.XXX ± 0.005"		SIZE	DWG NO	REV
APPROVED	.XX ± 0.01"		D	3501-215-9	--
	FRACT. ± 1/16"		SCALE	SHEET 1 OF 1	
	ANGLES ± 1'				